

Exercise prescription for overhead athletes with shoulder pathology: a systematic review with best evidence synthesis

Alexis A Wright,¹ Eric J Hegedus,¹ Daniel T Tarara,² Samantha C Ray,³ Steven L Dischiavi¹

► Additional material is published online only. To view please visit the journal online (<http://dx.doi.org/10.1136/bjsports-2016-096915>).

¹Department of Physical Therapy, High Point University, High Point, North Carolina, USA

²Department of Exercise Science, High Point University, High Point, North Carolina, USA

³Department of Physical Therapy, Duquesne University, Pittsburgh, Pennsylvania, USA

Correspondence to

Dr Alexis A Wright, High Point University, One University Parkway, Drawer 67 High Point, NC 27262, USA; awright@highpoint.edu

Accepted 17 March 2017
Published Online First
12 April 2017

ABSTRACT

Objective To produce a best evidence synthesis of exercise prescription used when treating shoulder pathology in the overhead athlete.

Design A systematic review of exercises used in overhead athletes including case studies and clinical commentaries.

Data sources MEDLINE, PubMed, SPORTDiscus and CINAHL from database inception through July 8, 2016.

Methods We examined data from randomised controlled trials and prospective cohort (level I–IV evidence) studies that addressed exercise intervention in the rehabilitation of the overhead athlete with shoulder pathology. Case studies and clinical commentaries (level V evidence) were examined to account for expert opinion-based research. Data were combined using best evidence synthesis and graded (A–F) recommendations (Centre for Evidence-Based Medicine).

Results There were 33 unique exercises in six level I–IV studies that met our inclusion criteria. Most exercises were single-plane, upper extremity exercises performed below 90° of elevation. There were 102 unique exercises in 33 level V studies that met our inclusion criteria. These exercises emphasised plyometrics, kinetic chain and sport-specific training.

Conclusions and relevance Overall, evidence for exercise interventions in overhead athletes with shoulder pathology is dominated by expert opinion (grade D). There is great variability between exercise approaches suggested by experts and those investigated in research studies and the overall level of evidence is low. The strongest available evidence (level B) supports the use of single-plane, open chain upper extremity exercises performed below 90° of elevation and closed chain upper extremity exercises. Clinical expert pieces support a more advanced, global treatment approach consistent with the complex, multidimensional nature of sport.

INTRODUCTION

According to the National Collegiate Athletic Association (NCAA) Injury Surveillance System, over a 16-year span, across 15 sports, upper extremity injuries accounted for 18.3% and 21.4% of game and practice injuries, respectively.¹ Overhead athletes are at high risk for injury, with up to 30% of intercollegiate overhead athletes suffering a shoulder injury at some point in their athletic career.² While the literature is dominated by shoulder injuries suffered by the throwing athlete, shoulder pain is the most frequent orthopaedic injury suffered in both men's and women's collegiate swimming and

diving with a reported prevalence ranging from 34.7% to 66.7%, according to the NCAA injury surveillance programme.^{3,4}

Given the high prevalence of shoulder pathology, overhead athletes are likely to seek treatment from a trained rehabilitation professional with the goal of returning to their respective sport at 100% function. The most common impairments seen in this population include strength deficits and motor control impairments, primarily found at the glenohumeral and/or scapulothoracic joints, resulting from the repetitive overhead demand of the sport, periscapular muscle fatigue, altered neurobiomechanics and subsequent injury.² While there are a number of studies examining the effectiveness of conservative management for shoulder impingement syndrome (a non-specific term for many shoulder pathologies that cause shoulder pain when the arm is lifted overhead),^{5–7} the scientific evidence to support any specific exercise protocols for the overhead athlete is uncertain.

For the clinician, integrating the best evidence for practice addressing patient impairments, functional status and participation status required of an overhead athlete is a challenge. Current evidence-based guidelines^{7–16} for treating shoulder pain are non-specific to the overhead athlete population and are primarily based on populations of older adults, who typically have less rigorous functional and participation demands than overhead athletes. Therefore, the primary objective of this systematic review was to produce a best evidence synthesis of exercise prescription used to treat shoulder pathology in the overhead athlete.

METHODS

This systematic review was conducted and reported according to the Preferred Reporting Items for Systematic reviews and Meta-Analysis (PRISMA)¹⁷ using a research question that was informed by PICOS methodology. The PRISMA checklist for this study is available as an online supplemental file (online supplementary appendix A). PICOS is an acronym representing population (overhead athletes), intervention (exercise therapy), comparison (control group, comparison exercise), outcome (pain, strength, return to sport) and study design (randomised controlled trial, cohort study, case series).

Identification and selection of the literature

We searched the electronic databases MEDLINE, PubMed, SPORTDiscus and CINAHL from



To cite: Wright AA, Hegedus EJ, Tarara DT, et al. *Br J Sports Med* 2018;**52**:231–237.

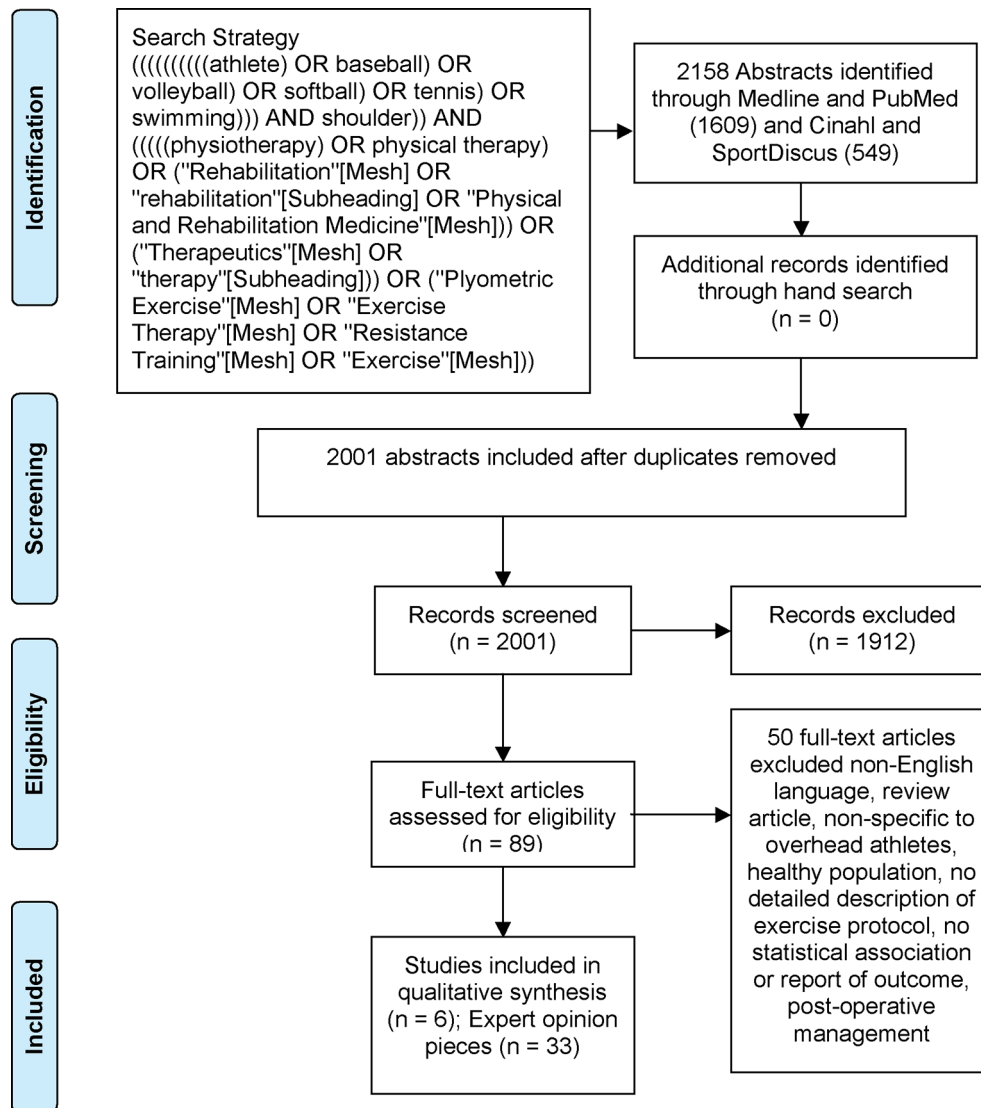


Figure 1 PRISMA (Preferred Reporting Items for Systematic reviews and Meta-Analysis) flow diagram of included studies.

database inception through July 8, 2016. Sport-specific search terms were combined with exercise and rehabilitation search terms using the Boolean operator AND (figure 1). A hand search was also conducted which included the authors' private collections, the reference lists of previous related systematic reviews, and the reference lists of selected abstracts not included in the original search criteria. Google Scholar was also searched using a combination of the sport name (eg, volleyball) and the term exercise.

Selection criteria

Because we anticipated limited high-quality evidence from randomised clinical trials, we included all study designs in our review. For a clinical trial, cohort study or case series (research-based evidence) to be included, it needed to meet the following criteria: (1) overhead athletic population; (2) population included a shoulder injury or shoulder pain; (3) detailed description of exercise interventions; (4) included an analytical component (ie, the study examined the effectiveness of an intervention on at least one level of impairment (eg, pain, strength, range of motion), function, or participation/return to play); (5) was available in full-text and (6) published in English language. Clinical commentaries, expert opinion, narrative reviews, consensus

statements and clinical practice guidelines (expert opinion-based evidence) published by experts in the field of sports medicine were included if they (1) reported on the non-operative management of shoulder pathology in the overhead athlete; (2) had a detailed description of the exercise intervention and (3) identified a specific exercise or approach different from that provided by clinical trials, cohort studies or case series. Experts were defined as having had at least 5 years clinical experience treating overhead athletes as a specialty focus or were identified as a board certified clinical specialist in Orthopaedic or Sports Physical Therapy, or its international equivalent.

Cadaver or non-human studies were excluded. Studies were also excluded if participants had a history of stroke or hemiplegia, the exercise intervention was not described in sufficient detail to be reproduced in a clinical setting (eg, patient positioning, shoulder positioning), a full-text version of the abstract was unable to be located, the association between an exercise intervention and an outcome was not examined (for clinical trials, cohort studies or case series), or the topic of the paper was postoperative management. For the purposes of limiting repetition and over-representation of expert opinion pieces, multiple manuscripts published by the same author were screened for inclusion only if additional, unique exercises were included.

To identify relevant articles, titles and abstracts of all database-captured citations were independently screened by at least two authors (AAW, SLD, DTT) applying the a priori selection criteria. Full-text articles were retrieved if the abstract provided insufficient information to establish eligibility or if the article passed the first eligibility screening. In situations where disagreement concerning whether to include an article occurred, the three authors discussed the issues and came to a consensus. All criteria were again independently applied by two authors (AAW, SLD) to the full text of the articles that passed the first eligibility screening. In case of disagreement, a consensus method was used to discuss and solve the disagreement. In the event that agreement could not be reached, a third author (EJH) served as the deciding vote.

Risk of bias assessment

Risk of bias (for clinical trials, cohort studies and case series) was independently assessed by two reviewers (SLD, DTT) using the modified Downs and Black^{18 19} checklist for non-randomised studies (online supplementary table 1). The modified Downs and Black checklist is comprised 27 items, each with a *yes/no/unable to determine* answer option. Ten items related to reporting of overall quality of the study, three items to external validity, seven items to study bias, six items to confounding and selection bias, and one item related to the power of the study. Disagreements among the reviewers were resolved by consensus. The maximum score on the modified Downs and Black checklist was 28. Item 5 had a possible score of 2 if scored 'yes,' 1 if scored 'partially' and 0 if scored 'No.' The total score was the count of all of the criteria that scored 'yes.' 'No' and 'unable to determine' carried a zero score value. For each study, a total quality score was given based on the information provided. Based on risk of bias assessment scores, studies were classified as high quality/low risk of bias (≥ 20), moderate quality/risk of bias (17–19) or low quality/high risk of bias (≤ 16).²⁰ Higher modified Downs and Black checklist scores indicate less risk of bias than lower scores. No formal risk of bias assessment was performed for expert opinion pieces. Quality of included expert opinion pieces was based on our definition of expert as previously defined.

Data extraction

For articles reporting original data, four reviewers (AAW, DTT, SCR and SLD) independently extracted information and data regarding study population, study design, exercise interventions, outcome data (eg, mean change; p value) associated with the intervention, study quality and level of evidence. Any discrepancies were resolved during a consensus meeting. Three reviewers (AAW, DTT and SLD) categorised exercises as:

- ▶ upper extremity exercise $\leq 90^\circ$ of elevation
- ▶ upper extremity exercise $> 90^\circ$ of elevation
- ▶ closed chain upper extremity exercise
- ▶ unspecified upper extremity exercise
- ▶ isokinetic exercise
- ▶ plyometric exercise
- ▶ kinetic chain/core/lower extremity exercise
- ▶ sport-specific exercise.

Rather than assuming patient and shoulder-specific positioning, named exercises that failed to identify specific positioning were classified as *unspecified*. Authors were contacted by email to clarify the shoulder position for exercises classified as *unspecified*.

For expert opinion pieces (clinical commentaries), data extraction and tabulation of prescribed exercises followed the

same format as original data articles, with categorisation of exercises according to phases of exercise progression. Data were extracted from expert opinion pieces on two grounds: (1) the manuscript identified a specific exercise or approach different from that provided by clinical trials, cohort studies or case series; and (2) in instances where multiple manuscripts were identified with the same lead author, data were only extracted from each additional manuscript if a new exercise was introduced.

Best evidence synthesis

We used the 2009 Centre for Evidence-Based Medicine (CEBM)²¹ levels of evidence for interventions to synthesise the data (<http://www.cebm.net/oxford-centre-evidence-based-medicine-levels-evidence-march-2009/>) since they allow ranking of evidence to include expert opinion. We modified these criteria so that level I was indicative of evidence from a randomised controlled trial; level II indicated a cohort study; level III indicated a case-control study; level IV a case series; and level V a case study or expert opinion to include clinical commentaries.

Results were dichotomised into exercises from (1) CEBM levels I–IV, and (2) CEBM level V, to allow comparison and comment on research-based recommendations versus more clinically based recommendations. For convenience, all identified shoulder exercises were tabulated and categorised under common clinical phases of progression (*open chain below 90° of elevation*; *open chain above 90° of elevation*). Finally, the strength of the entire spectrum of evidence was considered using a modified version of the CEBM 'Grades of Recommendation.' In our modified version, an A–F grading system was used: A signifies consistent findings in > 2 level I studies; B—consistent findings in > 2 level II or III studies or ≤ 2 level I studies; C—findings from > 2 level IV studies or ≤ 2 level II or III studies; D—findings from > 2 level V studies; and F—conflicting findings or findings from ≤ 2 level V studies. Level of evidence was downgraded one level for any study rated as having a moderate or high risk of bias by the Downs and Black criteria due to the greater uncertainty of the clinical applicability of the findings. In this final stage of the synthesis (assigning of A–F grade), exercises categorised as 'unspecified' were not included as we could not confidently detail specifics related to how exercises were being performed.

RESULTS

The database search, along with reference checking, yielded a total of 39 studies (3 prospective cohort,^{22–24} 2 randomised cohort,^{25 26} 1 case series²⁷ and 33 expert opinion^{28–60}) for inclusion in the systematic review (figure 1). Fifty studies were excluded as they were non-specific to the overhead athlete population; they failed to provide a detailed, reproducible description of the exercise intervention; they reported on postoperative management; or they failed to report any statistical analysis between the exercise intervention and any outcome measure (for clinical trials, cohort studies and case series).

A detailed summary of the study characteristics is shown in online supplementary appendix B. Of the six research-based studies, three reported on shoulder impingement^{22 25 27} and three on shoulder pain or inhibition due to pain.^{23 24 26} Reported sporting events included baseball, volleyball, tennis, canoe polo, swimming, badminton and handball. A total of 191 athletes (118 male, 73 female) were studied. Reported outcomes were primarily at the impairment level with strength changes (including changes in peak torque) reported most commonly followed by subjective pain report. One study²⁷ used a functional

Table 1 Modified Downs and Black checklist (risk of bias assessment) for the six cohort, clinical trial studies

Study item	Reporting								External validity		Internal validity (study bias)								Internal validity— confounding (selection bias)							Power	Score (out of 28)	Per cent	
	1	2	3	4	5	6	7	8	9	10	11	12	13	14	15	16	17	18	19	20	21	22	23	24	25				26
Cha et al ²⁵	1	1	1	1	1	1	1	0	1	1	0	0	0	0	1	1	1	1	1	1	1	0	1	0	0	1	0	17	60.7%
De Mey et al ²⁷	1	1	1	1	2	1	1	1	1	1	0	0	0	0	1	1	1	1	1	1	0	1	0	0	0	1	0	18	64.3%
Lee et al ²²	1	1	1	1	2	1	1	0	1	1	0	0	0	0	0	1	1	1	1	1	0	0	0	0	0	0	14	50.0%	
Merolla et al ²³	1	1	1	1	2	1	1	0	1	0	1	1	0	0	0	1	1	0	1	1	0	0	0	0	0	0	1	16	57.1%
Merolla et al ²⁴	1	1	1	1	2	1	1	0	1	0	0	0	0	0	0	1	0	0	1	0	0	0	0	0	0	0	1	12	42.9%
Osteras et al ²⁶	1	1	1	1	1	1	1	1	1	1	0	0	0	0	1	1	1	0	1	1	1	1	1	0	1	0	1	19	67.9%

outcome measure, the Shoulder Pain and Disability Index. No 'return to play' outcomes were reported in any of the included studies. An analysis of the effects of specific exercise components contained within the overall rehabilitation protocol was precluded due to insufficient data.

Downs and Black checklist results for the research-based studies ranged from 12 (42.9%)²⁴ to 19 (67.9%)²⁶ out of a possible 28 (table 1). Three studies were classified as moderate risk of bias^{25–27} and three studies were classified as high risk of bias.^{22–24} Three of six included studies were prospective single cohort designs. Two studies^{25 26} used a randomised design including an experimental versus control group. One study was described as a case series.²⁷ All six included studies had a moderate to high risk of bias. Most methodological shortcomings concerned external validity (items 11, 12 and 13); internal validity study bias (items 14 and 15); and confounding selection bias (items 21, 22, 23, 24, 25 and 26).

Summary of CEBM level I–IV studies

Thirty-three unique exercises were identified among the six research-based studies that met our inclusion criteria for exercise interventions in the overhead athlete (table 2):

- ▶ 11/33, 33% of prescribed exercises were single-plane, upper extremity exercise $\leq 90^\circ$ of elevation.
- ▶ 3/33, 9% of prescribed exercises were upper extremity exercise $>90^\circ$ of elevation.
- ▶ 6/33, 18% of prescribed exercises were upper extremity exercise, closed chain.
- ▶ 13/33, 39% of prescribed exercises were upper extremity exercise, unspecified.

Summary of CEBM level V studies

We identified 102 unique exercises from expert opinion pieces^{28–60} (online supplementary table 2):

- ▶ 20/102, 20% of prescribed exercises were single-plane, upper extremity exercise $\leq 90^\circ$ of elevation.
- ▶ 8/102, 8% of prescribed exercises were upper extremity exercise $>90^\circ$ of elevation.
- ▶ 10/102, 10% of prescribed exercises were upper extremity exercise, closed chain.
- ▶ 4/102, 8% of prescribed exercises were upper extremity exercise, unspecified.
- ▶ 8/102, 8% of prescribed exercises were isokinetic exercises.
- ▶ 17/102, 17% of prescribed exercises were plyometric exercises.
- ▶ 20/102, 20% of prescribed exercises were kinetic chain/core/lower extremity exercises.
- ▶ 15/102, 15% of prescribed exercises were sport-specific (for basketball, throwing, baseball, tennis and swimming).

Best evidence synthesis of exercise prescription for the overhead athlete based on CEBM 'Grades of Recommendation'

There is level B evidence to support the use of both open chain upper extremity exercise performed below 90° of elevation and closed chain upper extremity exercises with overhead athletes with shoulder pathology (table 3). This recommendation is consistent across level I–V studies.

There is level C evidence to support the use of open chain upper extremity exercises performed above 90° of elevation with overhead athletes with shoulder pathology. This recommendation is consistent across level I–V studies.

There is level D evidence to support the use of isokinetic exercises of the upper extremity plyometric exercises, kinetic chain/core/lower extremity exercises and sport-specific training with overhead athletes with shoulder pathology (see online supplementary table 2 for examples of specific exercises). This recommendation is supported by level V studies alone.

DISCUSSION

There was limited evidence to support the use of any specific exercise intervention in overhead athletes undergoing rehabilitation for shoulder pathology. Compounding the problem is the fact that the published literature is of moderate quality, at best. Current advice regarding exercise prescription for overhead athletes is reported mostly as clinical commentaries or general topical review articles by field experts without strong research-based evidence. In addition, many studies including overhead athletes and outcome data were excluded because they did not report a detailed description of the rehabilitation protocol used. There is also a preponderance of evidence focused on individual muscle activation patterns while performing specific exercises (eg, forward flexion in side lying for the middle trapezius)⁶¹ but these studies are limited because they lack transference of specific exercises as part of a rehabilitation programme to functional outcomes or improvements.

The strongest available evidence (grades B and C) supports the use of single-plane, upper extremity exercises performed below the 90° horizontal (eg, shoulder external rotation in neutral, prone extension) with some incorporation of elastic resistance for exercise prescription in the overhead athlete with shoulder pathology. Expert opinion (level V evidence) included a wider variety of exercises with greater attention to the kinetic chain. Exercises identified by clinical experts had a stronger focus on kinetic chain/core/lower extremity and plyometric exercises, and sport-specific training programmes for basketball, throwers, baseball, tennis and swimming.

There is a gap between clinical practice and research, with clinical experts using more complex exercises that have yet to

Table 2 Prescribed exercises from higher levels of evidence (CEBM I–IV) included in the systematic review

Exercise	Cha et al	De Mey et al	Lee et al	Merolla et al	Merolla et al	Osteras et al
Upper extremity exercise ≤90°						
Forward flexion in side lying		x			x	
Prone extension	x	x		x	x	
Prone horizontal abduction		x			x	
Prone horizontal abduction at 90°/elbow flexion 90° (full external rotation)	x			x		
Row at 0° abduction					x	
Row at 90° abduction				x	x	
Scapular punching				x	x	
Shrug	x					
Side lying external rotation		x			x	
Standing external rotation at 90° abduction						x
Standing internal rotation at 90° abduction						x
Upper extremity exercise >90°						
Military press	x					
Prone horizontal abduction (full external rotation, 100° abduction)	x					
Scapular punching					x	
Upper extremity exercise—closed chain						
Closed chain (sling) internal rotation			x			
Closed chain (sling) external rotation			x			
Closed chain (sling) shoulder extension			x			
Closed chain (sling) shoulder flexion			x			
Floor push-ups						x
Press-ups	x					
Upper extremity exercise—unspecified						
External horizontal abduction	x					
Internal horizontal abduction	x					
Horizontal abduction	x					
External rotation	x					
Internal rotation	x					
Elbow extension	x					
Elbow flexion	x					
Forward flexion	x					
Scaption with external rotation	x					
Scaption with internal rotation	x					
Shoulder abduction	x					
Shoulder rowing	x					
Straight arm press	x					

CEBM, Centre for Evidence-Based Medicine.

undergo rigorous research trials to support their use as ‘evidence-based’ interventions. This gap can partially be explained by the idea that explanatory clinical trials typically are designed to capture intervention efficacy under ideal conditions whereas pragmatic trials attempt to understand the benefits under actual clinical conditions. The challenge for the researcher is gaining level I evidence while maintaining focus on how more complex interventions are being delivered in clinical practice.⁶²

One problem with current research-based evidence is that documented existing programmes continue to focus solely on the shoulder without addressing the global demands placed on the trunk and lower extremity prior to return to play. Overhead athletic performance is not isolated to a single event or joint. Maximising force development in the large muscles of the core and legs produces more than 51%–55% of the kinetic energy that is transferred to the hand.⁶³ Overhead throwing motion is a complex activity, involving the shoulder, trunk, spine and lumbo-pelvic-hip complex, that is achieved through the

activation of the kinetic chain,⁶³ to allow the sequential transfer of forces and motion. The throwing motion is a fluid, continuous movement that begins with the feet, which provide contact with the ground, maximising the ground reaction force, and creating a stable base for distal arm mobility.⁶³

A blinkered exercise approach (focusing on the shoulder and neglecting the rest of the body) to a complex system-wide activity may be partially responsible for reinjury rates.⁶⁴ Level V evidence supports incorporating global exercises (eg, lateral lunges with shoulder abduction/external rotation with a resistance band, lateral planks over Theraball) into sport-specific rehabilitation programmes.^{44 56} However, research-based evidence to substantiate these rehabilitation components is needed for confident transfer into clinical practice. In addition, research-based evidence is needed to support the sensorimotor component (speed, position, plane, load and duration) of current rehabilitation programmes challenging the athlete’s ability to stabilise the system both statically and dynamically while performing their specific athletic event.

Table 3 Best evidence synthesis in support of exercise prescription for the overhead athlete

Type of exercise (UE)	Recommendation	Strength of recommendation (A–F)
Open chain UE exercise below 90°	Based on consistent findings from level II and III studies, UE exercises below 90° shoulder elevation have evidence to support their use in overhead athletes with shoulder pathology. Expert opinion is in agreement with research findings	B
Open chain UE exercise above 90°	Based on consistent findings from level II and III studies, UE exercises above 90° of elevation have evidence to support their use in overhead athletes with shoulder pathology. Expert opinion is in agreement with research findings	C
Closed chain UE exercise	Based on consistent findings from level II and III studies, closed chain UE exercises have evidence to support their use in overhead athletes with shoulder pathology. Expert opinion is in agreement with research findings	B
Isokinetic exercise of the UE	Experts recommend isokinetic exercises both below and above 90° shoulder elevation in overhead athletes with shoulder pathology	D
Plyometric exercise	Experts recommend plyometric exercises both below and above 90° shoulder elevation in overhead athletes with shoulder pathology	D
Kinetic chain/core/lower extremity exercise	Experts recommend kinetic chain/core/lower extremity exercises in overhead athletes with shoulder pathology	D
Sport-specific training	Experts recommend sport-specific training in overhead athletes with shoulder pathology	D

For strength of recommendation: A=signifies consistent findings in >2 level I studies; B=consistent findings in >2 level II or III studies or =2 level I studies; C=findings from >2 level IV studies or =2 level II or III studies; D=findings from >2 level V studies; F=conflicting findings or findings from =2 level V studies.
UE, upper extremity

Implications for clinical practice

We identified 135 unique exercises from research-based evidence and expert opinion. This catalogue of exercises is meant as a reference resource, not a recipe book, to be used when developing a comprehensive rehabilitation programme. In general, we found grade B evidence in support of exercises we identify primarily as early-phase rehabilitation exercises: single-plane, open chain exercises below 90° of elevation and closed chain exercises. The quality of the evidence started to suffer when we identify exercises as a progression or advanced phase rehabilitation. Only grade C level evidence exists for the incorporation of exercises performed above 90° of elevation in overhead athletes. This is important because function above 90° of shoulder elevation is a key requirement for the overhead athlete. Plyometrics and sport-specific training was supported by expert opinion alone (these exercises have not been assessed in the research-based evidence), which is surprising given that the overhead athlete requires dynamic function that encompasses speed, power and endurance.

The preferred method of exercise progression used by level I–IV evidence was based on progressive overload.^{25 27} This is a one-size-fits-all approach that does not adequately account for tailoring exercise prescription to the individual, although this approach allows for the standardisation necessary for rigorous research. This is in contrast to the exercise programmes recommended by clinical experts,^{54 56} which incorporated progressive phases (acute, intermediate, advanced return to sport). Level V evidence considered the complex nature of sport (speed, load, duration) and attempted to address this with complex interventions. However, this makes it more difficult to standardise the intervention.

The disparity between research and clinical practice may encourage newer clinicians who search published literature to either practice in a fashion that does not resemble expert practice or to seek evidence primarily in the form of expert opinion. While we acknowledge the importance of early and accurate activation of isolated musculature (eg, prone shoulder extension), these exercises do not account for the complex functional demands of the overhead athlete. If the clinician only looks to the currently available research-based evidence for exercise

therapy to treat the overhead athlete with shoulder pathology, he or she would find him/herself relying on basic exercises used in the early stage of recovery to alleviate impairments, and without guidance regarding progression to functional outcomes including return to sport. Expert clinical reasoning is considered a vital part of evidence-based practice.^{65–67} By synthesising research-based and expert opinion-based evidence, we provide additional insight into exercises used by practising clinicians that have yet to undergo rigorous research trials to support their use as ‘research-based’ interventions.^{20 68}

Injury and recovery from injury in athletes represents a dynamic system,⁶⁹ where there are multiple internal and external factors, such that changing one affects all of the others.⁷⁰ Rehabilitation should address the complex, dynamic and multidimensional aspects of injury and recovery with exercise prescription that is based on athletic movement and performance as well the incorporation of local (joint), regional (trunk and extremity) and global (system-wide and spinal, paraspinal and supraspinal) approaches. In the context of rehabilitation in the overhead athlete, we recommend the use of single-plane exercises below 90° of shoulder elevation in the early phases of rehabilitation, with a graduated progression that addresses the regional (plyometrics) and global (dynamic, triplanar activities) issues that adequately prepare the athlete for return to sport.

Future research priorities

We have identified five key issues to help address the gap between research-based evidence and expert opinion:

1. High-quality randomised controlled trials are needed for examining the treatment effectiveness of individual exercises used in the overhead athlete.
2. Individual exercises need to be compared in terms of treatment effectiveness to assist the clinician in selecting the most efficient exercises for their overhead athlete.
3. Authors must improve the reporting of used interventions so that clinicians are able to replicate these exercises.
4. Research studies must include more advanced exercises such as plyometrics and kinetic chain exercises to determine the effectiveness of these exercises.

What is already known

- ▶ Exercise therapy is an effective treatment approach for individuals with shoulder pathology.
- ▶ A majority of reported exercises supported by the six level I–IV studies consist of single-plane, upper extremity exercise performed below 90° of shoulder elevation.
- ▶ Athlete rehabilitation programmes have long been used by sports medicine experts as part of the rehabilitation process for the overhead athlete.

What are the new findings?

- ▶ There is a mismatch between exercises supported by evidence-based research and exercises recommended by clinical experts when prescribing exercises for the overhead athlete with shoulder pathology.
- ▶ There are no high-quality randomised controlled trials examining exercise prescription in the overhead athlete.
- ▶ Grade C evidence exists for the incorporation of upper extremity exercises above 90° of shoulder elevation for overhead athletes.
- ▶ Grade D (level V) evidence exists for the incorporation of isokinetics, plyometrics, kinetic chain/core/lower extremity, and sport-specific training for the overhead athlete with shoulder pathology.

5. For treatment outcomes, priority must be given to functional outcomes and return to play over impairment level outcomes (pain, strength) to capture the primary interest of the athlete.

Limitations

Of the 39 articles assessed, only six met the criteria as CEBM levels I–IV and there were no studies of level I evidence. Thirty-three of the 39 studies were rated as level V, expert opinion evidence. This limited the strength of recommendations we could make. Of the CEBM level I–IV studies, only one study used a validated self-report functional outcome measure,²⁷ whereas the others primarily reported on outcomes at the impairment level only (pain, strength). None of the included studies reported return to play outcomes. We recognise the risk of publication bias as we only included published literature as well as language bias as we only included articles published in English. Last, we acknowledge that this review is dominated by exercises recommended by clinical experts, which at this time remains grade D evidence.

Summary

There is grade B evidence to support the use of single-plane exercises performed below 90° of shoulder elevation in overhead athletes with shoulder pathology. Advanced exercise prescription (eg, sport-specific training) for overhead athletes with shoulder pathology is supported by grade D evidence.

Contributors All named authors assisted with the idea, development, data synthesis and analysis, writing, and revision of the submitted manuscript.

Competing interests None declared.

Provenance and peer review Not commissioned; externally peer reviewed.

© Article author(s) (or their employer(s) unless otherwise stated in the text of the article) 2018. All rights reserved. No commercial use is permitted unless otherwise expressly granted.

REFERENCES

- 1 Hootman JM, Dick R, Agel J. Epidemiology of collegiate injuries for 15 sports: summary and recommendations for injury prevention initiatives. *J Athl Train* 2007;42:311–9.
- 2 Laudner K, Sipes R. The incidence of shoulder injury among collegiate overhead athletes. *Journal of Intercollegiate Sport* 2009;2:260–8.
- 3 Roos KG, Marshall SW, Kerr ZY, et al. Epidemiology of overuse injuries in collegiate and high school athletics in the United States. *Am J Sports Med* 2015;43:1790–7.
- 4 Kerr ZY, Baugh CM, Hibberd EE, et al. Epidemiology of National Collegiate Athletic Association men's and women's swimming and diving injuries from 2009/2010 to 2013/2014. *Br J Sports Med* 2015;49:465–71.
- 5 Gebremariam L, Hay EM, van der Sande R, et al. Subacromial impingement syndrome—effectiveness of physiotherapy and manual therapy. *Br J Sports Med* 2014;48:1202–8.
- 6 Haik MN, Albuquerque-Sendín F, Moreira RF, et al. Effectiveness of physical therapy treatment of clearly defined subacromial pain: a systematic review of randomised controlled trials. *Br J Sports Med* 2016;50:1124–34.
- 7 Salychev M, Äärimaa V, Virolainen P, et al. Conservative treatment or surgery for shoulder impingement: systematic review and meta-analysis. *Disabil Rehabil* 2015;37:1–8.
- 8 Diercks R, Bron C, Dorrestijn O, et al; Dutch Orthopaedic Association. Guideline for diagnosis and treatment of subacromial pain syndrome: a multidisciplinary review by the Dutch Orthopaedic Association. *Acta Orthop* 2014;85:314–22.
- 9 Warby SA, Pizzari T, Ford JJ, et al. The effect of exercise-based management for multidirectional instability of the glenohumeral joint: a systematic review. *J Shoulder Elbow Surg* 2014;23:128–42.
- 10 Dong W, Goost H, Lin XB, et al. Treatments for shoulder impingement syndrome: a PRISMA systematic review and network meta-analysis. *Medicine* 2015;94:e510.
- 11 Abdulla SY, Southerst D, Cote P, et al. Is exercise effective for the management of subacromial impingement syndrome and other soft tissue injuries of the shoulder? A systematic review by the Ontario Protocol for Traffic Injury Management (OPTiMa) Collaboration. *Man Ther* 2015;20:646–56.
- 12 Osborne JD, Gowda AL, Wiater B, et al. Rotator cuff rehabilitation: current theories and practice. *Phys Sportsmed* 2016;44:85–92.
- 13 Goldgrub R, Cote P, Sutton D, et al. The effectiveness of multimodal care for the management of soft tissue injuries of the shoulder: a systematic review by the Ontario Protocol for Traffic Injury Management (OPTiMa) collaboration. *J Manipulative Physiol Ther* 2016;39:121–39.
- 14 Reijnen EA, Noten S, Michener LA, et al. Clinical outcomes of a scapular-focused treatment in patients with subacromial pain syndrome: a systematic review. *Br J Sports Med* 2017;51:436–41.
- 15 Bury J, West M, Chamorro-Moriana G, et al. Effectiveness of scapula-focused approaches in patients with rotator cuff related shoulder pain: a systematic review and meta-analysis. *Man Ther* 2016;25:35–42.
- 16 Watson L, Warby S, Balster S, et al. The treatment of multidirectional instability of the shoulder with a rehabilitation program: part 1. *Shoulder Elbow* 2016;8:271–8.
- 17 Moher D, Liberati A, Tetzlaff J, et al; PRISMA Group. Preferred reporting items for systematic reviews and meta-analyses: the PRISMA statement. *Bmj* 2009;339:b2535.
- 18 Downs SH, Black N. The feasibility of creating a checklist for the assessment of the methodological quality both of randomised and non-randomised studies of health care interventions. *J Epidemiol Community Health* 1998;52:377–84.
- 19 Trac MH, McArthur E, Jandoc R, et al. Macrolide antibiotics and the risk of ventricular arrhythmia in older adults. *Cmaj* 2016;188:E120–E129.
- 20 Barton CJ, Bonanno DR, Carr J, et al. Running retraining to treat lower limb injuries: a mixed-methods study of current evidence synthesised with expert opinion. *Br J Sports Med* 2016;50:513–26.
- 21 OCEBM Levels of Evidence Working Group*. *The Oxford levels of evidence* 2009.
- 22 Lee DR, Kim JS. Improvement of internal and external rotation peak torque on little league baseball players with subacromial impingement syndrome by closed kinetic chain shoulder training. *J Sport Rehabil* 2015;25.
- 23 Merolla G, De Santis E, Campi F, et al. Supraspinatus and infraspinatus weakness in overhead athletes with scapular dyskinesis: strength assessment before and after restoration of scapular musculature balance. *Musculoskelet Surg* 2010a;94:119–25.
- 24 Merolla G, De Santis E, Sperling JW, et al. Infraspinatus strength assessment before and after scapular muscles rehabilitation in professional volleyball players with scapular dyskinesis. *J Shoulder Elbow Surg* 2010b;19:1256–64.
- 25 Cha JY, Kim JH, Hong J, et al. A 12-week rehabilitation program improves body composition, pain sensation, and internal/external torques of baseball pitchers with shoulder impingement symptom. *Journal Exerc Rehabil* 2014;10:35–44.
- 26 Osteras H, Sommerfeld M, Skjollberg A. Effects of a strength-training program for shoulder complaint prevention in female team handball athletes. A pilot study. *J Sports Med Fitness* 2015;55:761–7.
- 27 De Mey K, Danneels L, Cagnie B, et al. Scapular muscle rehabilitation exercises in overhead athletes with impingement symptoms: effect of a 6-week training program on muscle recruitment and functional outcome. *Am J Sports Med* 2012;40:1906–15.
- 28 Buteau JL, Eriksrud O, Hasson SM. Rehabilitation of a glenohumeral instability utilizing the body blade. *Physiother Theory Pract* 2007;23:333–49.

- 29 Frizziero A, Benedetti MG, Creta D, *et al*. Painful os acromiale: conservative management in a young swimmer athlete. *J Sports Sci Med* 2012;11:352–6.
- 30 Leao Almeida GP, De Souza VL, Barbosa G, *et al*. Swimmer's shoulder in young athlete: rehabilitation with emphasis on manual therapy and stabilization of shoulder complex. *Man Ther* 2011;16:510–5.
- 31 Logerstedt D. Functional neuromuscular rehabilitation of posterior shoulder dislocation in a high school baseball player. *J Sport Rehabil* 2004;13:167–82. 16p.
- 32 Peters C, George SZ. Outcomes following plyometric rehabilitation for the young throwing athlete: a case report. *Physiother Theory Pract* 2007;23:351–64.
- 33 Watson ST, Wyland DJ. Return to play after nonoperative management for a severe type III acromioclavicular separation in the throwing shoulder of a collegiate pitcher. *Phys Sportsmed* 2015;43:99–103.
- 34 Bonci CM, Sloane B, Middleton K. Nonsurgical/surgical rehabilitation of the unstable shoulder. *J Sport Rehabil* 1992;1:146–71. 26p.
- 35 Brewster C, Schwab DR. Rehabilitation of the shoulder following rotator cuff injury or surgery. *J Orthop Sports Phys Ther* 1993;18:422–6.
- 36 Brumitt J, Dale RB. Integrating shoulder and core exercises when rehabilitating athletes performing overhead activities. *N Am J Sports Phys Ther* 2009;4:132–8.
- 37 Brumitt J, Meira E; Rehab tips. Rehabilitation of the shoulder following rotator cuff injury or surgery. *Strength & Conditioning Journal* 2005;27:39–41.
- 38 Burkhardt SS, Morgan CD, Kibler WB. The disabled throwing shoulder: spectrum of pathology part III: the SICK scapula, scapular dyskinesis, the kinetic chain, and rehabilitation. *Arthroscopy* 2003;19:641–61.
- 39 Cools AM, Declercq G, Cagnie B, *et al*. Internal impingement in the tennis player: rehabilitation guidelines. *Br J Sports Med* 2008;42:165–71.
- 40 Cools AMJ, Struyf F, De Mey K, *et al*. Rehabilitation of scapular dyskinesis: from the office worker to the elite overhead athlete. *Br J Sports Med* 2014;48:692–7.
- 41 Davies GJ, Dickoff-Hoffman S. Neuromuscular testing and rehabilitation of the shoulder complex. *J Orthop Sports Phys Ther* 1993;18:449–58.
- 42 Kelley MJ. Anatomic and biomechanical rationale for rehabilitation of the athlete's shoulder. *J Sport Rehabil* 1995;4:122–54.
- 43 Kennedy DJ, Visco CJ, Press J. Current concepts for shoulder training in the overhead athlete. *Curr Sports Med Rep* 2009;8:154–60.
- 44 Kibler WB, Kuhn JE, Wilk K, *et al*. The disabled throwing shoulder: spectrum of pathology-10-year update. *Arthroscopy* 2013;29:141–61.
- 45 Kibler WB, Livingston B. Closed-chain rehabilitation for upper and lower extremities. *J Am Acad Orthop Surg* 2001;9:412–21.
- 46 Kibler WB, McMullen J, Uhl T, *et al*. Shoulder rehabilitation strategies, guidelines, and practice. *Oper Tech Sports Med* 2012;20:103–12.
- 47 Lephart SM, Henry TJ. Functional rehabilitation for the upper and lower extremity. *Orthop Clin North Am* 1995;26:579–92.
- 48 Lephart SM, Henry TJ. The physiological basis of open and closed kinetic chain rehabilitation for the upper extremity. *J Sport Rehabil* 1996;5:17–71.
- 49 Manske RC, Reiman MP, Stovak ML. Nonoperative and operative management of snapping scapula. *Am J Sports Med* 2004;32:1554.
- 50 Pappas AM, Zawacki RM, McCarthy CF. Rehabilitation of the pitching shoulder. *Am J Sports Med* 1985;13:223–35.
- 51 Pezzullo DJ, Karas S, Irrgang JJ. Functional plyometric exercises for the throwing athlete. *J Athl Train* 1995;30:22–6.
- 52 Plancher KD, Litchfield R, Hawkins RJ. Rehabilitation of the shoulder in tennis players. *Clin Sports Med* 1995;14:111–37.
- 53 Reinold MM, Curtis AS. Microinstability of the shoulder in the overhead athlete. *Int J Sports Phys Ther* 2013;8:601–16.
- 54 Reinold MM, Gill TJ, Wilk KE, *et al*. Current concepts in the evaluation and treatment of the shoulder in overhead throwing athletes, part 2: injury prevention and treatment. *Sports Health* 2010;2:101–15.
- 55 Reinold MM, Wilk KE, Reed J, *et al*. Interval sport programs: guidelines for baseball, tennis, and golf. *J Orthop Sports Phys Ther* 2002;32:293–8.
- 56 Wilk KE, Arrigo CA, Hooks TR, *et al*. Rehabilitation of the overhead throwing athlete: there is more to it than just external rotation/internal rotation strengthening. *PM & R* 2016;8:S78–90.
- 57 Wilk KE, Hooks TR. Rehabilitation of the throwing athlete: where we are in 2014. *Clin Sports Med* 2015;34:247–61.
- 58 Wilk KE, Macrina LC. Nonoperative and postoperative rehabilitation for injuries of the throwing shoulder. *Sports Med Arthrosc* 2014;22:137–50.
- 59 Wilk KE, Meister K, Andrews JR. Current concepts in the rehabilitation of the overhead throwing athlete. *Am J Sports Med* 2002;30:136–51.
- 60 Wilk KE, Yenchak AJ, Arrigo CA, *et al*. The advanced throwers ten exercise program: a new exercise series for enhanced dynamic shoulder control in the overhead throwing athlete. *Phys Sportsmed* 2011;39:90–7.
- 61 Cools AM, Borms D, Cottens S, *et al*. Rehabilitation exercises for athletes with biceps disorders and SLAP lesions: a continuum of exercises with increasing loads on the biceps. *Am J Sports Med* 2014;42:1315–22.
- 62 Sedgwick P. Explanatory trials versus pragmatic trials. *Bmj* 2014;349:g6694.
- 63 Chu SK, Jayabalan P, Kibler WB, *et al*. The kinetic chain revisited: new concepts on throwing mechanics and injury. *PM & R* 2016;8:S69–77.
- 64 Makhni EC, Lee RW, Nwosu EO, *et al*. Return to competition, re-injury, and impact on performance of preseason shoulder injuries in Major League Baseball pitchers. *Phys Sportsmed* 2015;43:300–6.
- 65 Sackett DL, Rosenberg WM, Gray JA, *et al*. Evidence based medicine: what it is and what it isn't. *Bmj* 1996;312:71–2.
- 66 Straus SE, Sackett DL. Using research findings in clinical practice. *Bmj* 1998;317:339–42.
- 67 Swisher AK. Practice-based evidence. *Cardiopulm Phys Ther J* 2010;21:4.
- 68 Barton CJ, Lack S, Hemmings S, *et al*. The 'Best Practice Guide to Conservative Management of Patellofemoral Pain': incorporating level 1 evidence with expert clinical reasoning. *Br J Sports Med* 2015;49:923–34.
- 69 Cook C. Predicting future physical injury in sports: it's a complicated dynamic system. *Br J Sports Med* 2016 (Published Online First [10 June 2016]).
- 70 de Bot K, Lowie W, Verspoor M. A dynamic systems theory approach to second language acquisition. *Bilingualism: Language and Cognition* 2007;10:7–21.