



OPEN ACCESS

Device-measured physical activity, adiposity and mortality: a harmonised meta-analysis of eight prospective cohort studies

Jakob Tarp ¹, Morten W Fagerland,¹ Knut Eirik Dalene,¹ Jostein Steene Johannessen,¹ Bjørge H Hansen,^{1,2} Barbara J Jefferis ³, Peter H Whincup,⁴ Keith M Diaz ⁵, Steven Hooker,⁶ Virginia J Howard,⁷ Ariel Chernofsky,⁸ Martin G Larson,⁸ Nicole L Spartano,⁹ Ramachandran S Vasan,¹⁰ Ing-Mari Dohrn ¹¹, Maria Hagströmer,^{11,12} Charlotte Edwardson,^{13,14} Thomas Yates ^{13,14}, Eric J Shiroma,¹⁵ Paddy C Dempsey ^{16,17}, Katrien Wijndaele,¹⁶ Sigmund A Anderssen,¹ I-Min Lee ^{18,19}, Ulf Ekelund^{1,20}

► Additional supplemental material is published online only. To view, please visit the journal online (<http://dx.doi.org/10.1136/bjsports-2021-104827>).

For numbered affiliations see end of article.

Correspondence to

Dr Jakob Tarp, Department of Sports Medicine, Norwegian School of Sports Sciences, Oslo 0806, Norway; jtarp@clin.au.dk

Accepted 17 November 2021
Published Online First
7 December 2021

ABSTRACT

Background The joint associations of total and intensity-specific physical activity with obesity in relation to all-cause mortality risk are unclear.

Methods We included 34 492 adults (72% women, median age 62.1 years, 2034 deaths during follow-up) in a harmonised meta-analysis of eight population-based prospective cohort studies with mean follow-up ranging from 6.0 to 14.5 years. Standard body mass index categories were cross-classified with sample tertiles of device-measured total, light-to-vigorous and moderate-to-vigorous physical activity and sedentary time. In five cohorts with waist circumference available, high and low waist circumference was combined with tertiles of moderate-to-vigorous physical activity.

Results There was an inverse dose–response relationship between higher levels of total and intensity-specific physical activity and mortality risk in those who were normal weight and overweight. In individuals with obesity, the inverse dose–response relationship was only observed for total physical activity. Similarly, lower levels of sedentary time were associated with lower mortality risk in normal weight and overweight individuals but there was no association between sedentary time and risk of mortality in those who were obese. Compared with the obese-low total physical activity reference, the HRs were 0.59 (95% CI 0.44 to 0.79) for normal weight-high total activity and 0.67 (95% CI 0.48 to 0.94) for obese-high total activity. In contrast, normal weight-low total physical activity was associated with a higher risk of mortality compared with the obese-low total physical activity reference (1.28; 95% CI 0.99 to 1.67).

Conclusions Higher levels of physical activity were associated with lower risk of mortality irrespective of weight status. Compared with obesity-low physical activity, there was no survival benefit of being normal weight if physical activity levels were low.

INTRODUCTION

Low levels of physical activity and high prevalence of obesity are major public health challenges worldwide.^{1 2} Physical activity and weight status are connected entities through long-term energy balance. However, increased physical activity

does not always lead to weight loss.^{3 4} Physical activity affects multiple metabolic pathways, such as glucose and lipid metabolism, and these pathways are considered strong mediators of adiposity-related morbidity.⁵ Thus, there is a strong biological plausibility that physical activity may counteract the detrimental consequences of obesity on longevity. Maintaining a healthy body weight, typically defined as a body mass index (BMI) between 18.5 and 25 kg/m², is considered a cornerstone in chronic disease prevention.⁶ However, the shape and magnitude of the dose–response association between BMI and risk of premature mortality is debated.^{7 8} Hence, to improve clinical counseling and public health messages, there is a need to understand the joint contributions of adiposity and other health behaviours, such as physical activity, in relation to mortality risk.

High levels of self-reported physical activity appear to attenuate, but not eliminate, the excess risk of mortality associated with obesity.^{9–11} However, studies based on self-reported activity are prone to cognitive biases, often focus on leisure-time physical activity only and are unable to capture sporadic and light-intensity physical activity (LPA) that can be difficult to recall. In contrast, device-based measures of physical activity can capture the total volume of activity performed throughout the day as well as the full spectrum of physical activity intensity including sedentary time.

Using data from an international collaboration with device-measured and harmonised physical activity data, we examined the combined associations of total and intensity-specific physical activity and sedentary time with BMI in relation to risk of all-cause mortality. We also examined combined associations of moderate-to-vigorous physical activity (MVPA) and waist circumference with mortality risk in a subset where these data were available.

METHODS

Studies

We have previously described how nine cohorts were identified from a systematic review and



© Author(s) (or their employer(s)) 2022. Re-use permitted under CC BY-NC. No commercial re-use. See rights and permissions. Published by BMJ.

To cite: Tarp J, Fagerland MW, Dalene KE, et al. *Br J Sports Med* 2022;**56**:725–732.

through personal contacts.^{12–14} Study selection, data extraction and bias assessment have also been described in detail.¹² For this study, we excluded one cohort restricted to individuals at high risk of type 2 diabetes because of the potential bias introduced by conditioning on a disease associated with both physical activity and BMI.¹⁵ Thus, data from the eight remaining cohorts from the USA, UK, Norway and Sweden were included in this pooled analysis.^{14 16–22} Since our previous work,¹³ we have acquired additional mortality follow-up from the Women's Health Study (mean follow-up time: 6.3 years), the Framingham Heart Study (mean: 7.0 years), the REasons for Geographic And Racial Differences in Stroke (REGARDS, mean: 7.8 years) and the European Prospective Investigation into Cancer and Nutrition-Norfolk (mean: 6.7 years).

Harmonisation of physical activity data

Six studies used a version of the ActiGraph accelerometer^{14 17–20 22} and two used an Actical accelerometer.^{16 21} Individual participant accelerometer data were reprocessed according to a standardised protocol by the participating study teams. We extracted data from only the vertical axis in 60 s epochs for harmonisation purposes. Non-wear time was defined as ≥ 90 consecutive minutes of zero counts, allowing for up to 2 min of non-zero counts if the interruption was preceded or followed by ≥ 30 min of zero counts.²³ We included all participants who recorded at least 10 hours of wear time per day for four or more days. Total physical activity was defined by total counts per day/wear time per day in minutes (counts per minute (CPM)). ActiGraph monitors defined LPA as 101–1951 CPM and MVPA as ≥ 1952 CPM.²⁴ Actical monitors defined LPA as 101–1534 CPM and MVPA as ≥ 1535 CPM.²⁵ The sedentary time count threshold was 100 CPM for both monitors.^{26 27}

Combinations of physical activity and weight status

We created tertiles of low, medium and high total physical activity, LPA, MVPA and sedentary time separately for each cohort and reported tertile medians for each cohort in online supplemental eTable 2. We combined these tertiles with the standard BMI categories (normal weight: 18.5–25, overweight: 25–30, obesity: ≥ 30 kg/m²), yielding nine physical activity–BMI combinations for each physical activity exposure. LPA, MVPA and sedentary time were normalised by wear time (per cent of wear time) before creating the tertiles. BMI was based on height and weight measured by trained staff in five cohorts^{14 18 20 21 28} and self-reported in three cohorts.^{17 19 22} We had access to measured waist circumference as a measure of central obesity, defined as waist circumference ≥ 88 cm for women and ≥ 102 cm for men, in five cohorts.^{14 18 20 21 28} These two categories were combined with tertiles of MVPA yielding six combinations of physical activity and waist circumference.

Analysis

All cohorts restricted analysis to participants >40 years of age as in our earlier work.¹² For this study, we excluded participants with less than 2 years of follow-up, a BMI less than 18.5 kg/m² or a history of cardiovascular disease (CVD) or cancer at the time of accelerometer assessment to minimise bias from reverse causation. In the REGARDS cohort, we were only able to exclude individuals with prevalent CVD because information on prevalent cancers was not collected in the full cohort. For each cohort, we used Cox proportional hazards regression models to estimate the HRs with 95% CIs of all-cause mortality for the participants in eight combinations of BMI and physical

activity, compared with the reference category (least active participants with obesity; ie, bottom third for physical activity or top third for sedentary time). Five HRs were estimated for waist circumference. The cohort-specific analyses were harmonised according to various levels of adjustment. Our main model adjusted for age, sex (when applicable), socioeconomic status, smoking and the covariates included in each cohort's published final multivariable-adjusted model (see online supplemental eTable 1 for details). Additionally, models with MVPA as the exposure were adjusted for sedentary time (continuous form), and models with LPA and sedentary time as exposure were adjusted for MVPA (continuous). We meta-analysed cohort-level HR estimates with a DerSimonian and Laird random effects model yielding eight pooled HRs with 95% CIs (five for waist circumference). When no cases were observed for a given combination of physical activity and BMI in a single cohort (eg, among never smokers in the cohorts including fewest participants), this cohort was not included in the meta-analysis of that particular combination (eg, obese with high physical activity) but was included in meta-analyses of the other combinations. The sample weights and the complex survey design of the National Health and Nutrition Examination Study (NHANES) were accounted for prior to analyses.²⁰

Sensitivity analysis

We performed a sensitivity analysis among never smokers because multivariable adjustment for smoking status is unlikely to fully capture confounding from smoking behaviours on the BMI–mortality association.⁷ As smoking is strongly associated with morbidity this restriction may also reduce the risk of reverse causation bias from subclinical disease leading to low physical activity.²⁹ Furthermore, we also present analyses including participants reporting prevalent CVD or cancer at baseline, but with adjustment for these conditions in the statistical model.^{8 29–31} Finally, we repeated the analysis only including the five cohorts with measured BMI and after exclusion of the REGARDS cohort that did not have information on prevalent cancers.

RESULTS

We included 34 492 participants (72% women; median age across cohorts: 62.1 years). These were followed for 6.0–14.5 years (median 7.4 years), during which 2034 died (5.9%). Table 1 presents the participant characteristics for each cohort with physical activity and sedentary time exposure levels in online supplemental eTable 2. Across cohorts, the prevalence of obesity ranged from 10.0% to 33.7% (median 19.4%). We present independent, multivariable-adjusted associations between physical activity, sedentary time and BMI categories with mortality risk in table 2. Total physical activity showed the strongest magnitude of an inverse association with mortality, and this association was largely unaffected by restriction to never smokers. There was no association between high sedentary time and mortality risk when restricting the analysis to never smokers. Compared with being normal weight, overweight was associated with a lower mortality while the association was attenuated for obesity. Restricting to never smokers inverted the association for obesity although the CIs still overlapped the line of unity.

Joint associations of physical activity, sedentary time and adiposity with mortality

Higher total physical activity, LPA and MVPA were associated with lower risk of mortality in all BMI categories (figure 1). The pattern of associations was roughly similar across physical activity

Table 1 Descriptive characteristics of included cohorts

| | NNPAS | | ABC | | EPIC-Norfolk | | BRHS |
|---|----------------|--------------|----------------|--------------|----------------|--------------|------------------|
| | Women (n=1050) | Men (n=875) | Women (n=432) | Men (n=338) | Women (n=2658) | Men (n=2009) | Men (n=940) |
| Age, mean (SD), years | 54.9 (10.5) | 55.4 (9.9) | 52.6 (10.2) | 52.5 (10.5) | 68.2 (6.99) | 69.0 (7.1) | 78.2 (4.4) |
| Counts/min, mean (SD) | 331 (131) | 341 (147) | 342 (216) | 360 (295) | 255 (107) | 272 (129) | 195 (108) |
| LPA/day, mean (SD), % of wear time | 34.6 (8.0) | 31.4 (8.3) | 38.8 (9.3) | 37.2 (9.8) | 32.4 (7.6) | 28.9 (7.5) | 26.3 (8.2) |
| MVPA/day, mean (SD), % of wear time | 3.9 (2.6) | 4.3 (2.9) | 3.4 (3.0) | 3.9 (3.1) | 3.6 (2.57) | 4.4 (3.2) | 2.0 (2.1) |
| Sedentary time/day, mean (SD), % of wear time | 61.6 (8.7) | 64.3 (9.0) | 57.7 (10.2) | 58.8 (11.0) | 64.0 (8.7) | 66.7 (8.9) | 71.8 (9.1) |
| BMI, mean (SD), kg/m ² | 25.2 (4.2) | 26.4 (3.4) | 25.4 (3.8) | 25.8 (2.9) | 26.4 (4.25) | 26.9 (3.6) | 27.1 (3.7) |
| Waist circumference, mean (SD), cm | ni | ni | ni | ni | 89.1 (11.09) | 99.8 (10.0) | 99.8 (10.7) |
| BMI ≥30 kg/m ² , n (%) | 122 (11.6) | 111 (12.7) | 50 (11.6) | 27 (8.0) | 476 (17.9) | 337 (16.8) | 178 (18.9) |
| Smoking, n (%) | | | | | | | |
| Never | 483 (46.0) | 400 (45.7) | 177 (40.9) | 147 (43.6) | 1581 (59.5) | 879 (43.8) | 413 (43.9) |
| Former | 361 (34.4) | 342 (39.1) | 133 (30.7) | 122 (36.2) | 919 (34.6) | 1016 (50.6) | 489 (52.0) |
| Current | 206 (19.6) | 133 (15.2) | 123 (28.4) | 68 (20.2) | 158 (5.9) | 114 (5.7) | 38 (4.0) |
| Ethnicity, n (%)* | | | | | | | |
| White | ni | ni | ni | ni | 2644 (99.8) | 1992 (99.5) | 916 (99.5) |
| Black | ni | ni | ni | ni | 0 (0.0) | 2 (0.1) | 1 (0.1) |
| Other | ni | ni | ni | ni | 5 (0.2) | 8 (0.4) | 4 (0.4) |
| | FHS | | REGARDS | | NHANES | | WHS |
| | Women (n=1628) | Men (n=1381) | Women (n=3649) | Men (n=2732) | Women (n=1453) | Men (n=1379) | Women (n=13 968) |
| Age, mean (SD), years | 56.2 (11.3) | 55.5 (10.7) | 67.8 (8.6) | 69.3 (8.3) | 55.5 (11.0) | 53.4 (10.1) | 71.7 (5.5) |
| Counts/min, mean (SD) | 151 (124) | 167 (118) | 86 (64.3) | 109 (80) | 280 (121) | 343 (153) | 225 (103) |
| LPA/day, mean (SD), % of wear time | 21.1 (6.7) | 21.8 (7.5) | 16.8 (7.6) | 17.9 (7.7) | 40.4 (9.9) | 39.5 (11.1) | 32.2 (8.4) |
| MVPA/day, mean (SD), % of wear time | 1.9 (2.3) | 2.2 (2.3) | 0.8 (1.3) | 1.2 (1.8) | 2.1 (2.1) | 3.5 (2.9) | 1.7 (1.9) |
| Sedentary time/day, mean (SD), % of wear time | 77.1 (7.5) | 76.1 (8.2) | 82.4 (8.1) | 80.9 (8.4) | 57.5 (10.6) | 57.0 (12.1) | 66.1 (9.1) |
| BMI, mean (SD), kg/m ² | 27.4 (5.8) | 28.9 (4.7) | 29.0 (6.3) | 28.3 (4.7) | 28.9 (6.8) | 28.7 (4.9) | 26.4 (4.9) |
| Waist circumference, mean (SD), cm | 94.5 (14.5) | 103.0 (12.3) | 89.5 (14.9) | 98.4 (12.0) | 95.3 (14.7) | 103.1 (12.9) | ni |
| BMI ≥30 kg/m ² , n (%) | 426 (26.2) | 460 (33.3) | 1350 (37.0) | 787 (28.8) | 500 (34.4) | 455 (33.0) | 2775 (19.9) |
| Smoking, n (%) | | | | | | | |
| Never | 862 (52.9) | 782 (56.6) | 2098 (57.5) | 1150 (42.1) | 847 (58.3) | 575 (41.7) | 7112 (50.9) |
| Former | 641 (39.4) | 506 (36.6) | 1179 (32.3) | 1303 (47.7) | 371 (25.5) | 476 (34.5) | 6379 (45.7) |
| Current | 125 (7.7) | 93 (6.7) | 372 (10.2) | 281 (10.3) | 235 (16.2) | 328 (23.8) | 477 (3.4) |
| Ethnicity, n (%) | | | | | | | |
| White | 1461 (89.7) | 1261 (91.3) | 2354 (64.5) | 1987 (72.7) | 1101 (75.8) | 1070 (77.6) | 13 290 (95.2) |
| Black | 52 (3.2) | 24 (1.7) | 1295 (35.5) | 745 (27.3) | 148 (10.2) | 127 (9.2) | 224 (1.6) |
| Other | 115 (7.1) | 96 (7.0) | 0 (0.0) | 0 (0.0) | 203 (14.0) | 182 (13.2) | 454 (3.2) |

All studies used a version of the ActiGraph accelerometers, except REGARDS and FHS which used Actical accelerometers.

*Numbers may not sum to total sample due to missing data.

ABC, Sweden Attitude, Behaviour and Change study; BMI, body mass index; BRHS, British Regional Heart Study; EPIC-Norfolk, European Prospective Investigation into Cancer and Nutrition-Norfolk; FHS, Framingham Heart Study; LPA, light-intensity physical activity; MVPA, moderate-to-vigorous physical activity; NHANES, National Health and Nutrition Examination Study; ni, no information; NNPAS, Norwegian National Physical Activity Survey; REGARDS, REasons for Geographic And Racial Differences in Stroke; WHS, Women's Health Study.

variables, but with more consistent dose–response patterns and stronger effect sizes for total physical activity. The effect sizes for high total physical activity versus obesity-low activity were similar across BMI categories: 0.59 (95% CI 0.44 to 0.79), 0.56 (95% CI 0.40 to 0.79) and 0.67 (95% CI 0.48 to 0.94) for normal weight, overweight and obesity, respectively. In contrast, in individuals with obesity, high LPA was not associated with lower mortality (1.00, 95% CI 0.67 to 1.49) and the strength of the association for MVPA was weaker than observed in the normal weight and overweight categories. However, when BMI was replaced with waist circumference combined with MVPA, similar inverse associations of high MVPA were observed in those with low (0.56, 95% CI 0.36 to 0.97) and high (0.61, 95% CI 0.46 to 0.82) central adiposity (figure 2). Less time

spent sedentary appeared to be associated with lower mortality in the normal weight and overweight categories, but sedentary time was not associated with mortality risk in the obese category (figure 1).

Supplementary and sensitivity analyses

Sensitivity analysis restricting to never smokers removed the higher mortality risk among the normal weight-low active group but did not otherwise change interpretation of the results (figure 3). Results without adjustment for other physical activity behaviours are shown in online supplemental eFigure 1. Sensitivity analyses excluding the REGARDS cohort and restricting to cohorts with measured BMI suggested results were largely

Table 2 Independent associations between physical activity, sedentary time and BMI with all-cause mortality

| | Multivariable adjusted | | Multivariable adjusted, restricted to never smokers | |
|---|------------------------|---------------------|---|---------------------|
| | n (deaths) | HR (95% CI) | n (deaths) | HR (95% CI) |
| BMI categories | | | | |
| Normal weight (18.5–25 kg/m ²) | 13 030 (745) | Reference | 6823 (318) | Reference |
| Overweight (25–30 kg/m ²) | 13 400 (784) | 0.85 (0.75 to 0.97) | 6548 (315) | 0.91 (0.76 to 1.08) |
| Obesity (≥30 kg/m ²) | 8062 (505) | 0.93 (0.82 to 1.07) | 4114 (231) | 1.12 (0.91 to 1.37) |
| Total physical activity | | | | |
| T1 (least active) | 11 474 (1230) | Reference | 5603 (508) | Reference |
| T2 | 11 511 (475) | 0.59 (0.52 to 0.67) | 5839 (203) | 0.66 (0.51 to 0.87) |
| T3 | 11 507 (329) | 0.53 (0.42 to 0.66) | 6043 (153) | 0.59 (0.47 to 0.73) |
| Light physical activity | | | | |
| T1 (least active) | 11 483 (1112) | Reference | 5760 (470) | Reference |
| T2 | 11 500 (531) | 0.69 (0.62 to 0.77) | 5830 (224) | 0.74 (0.62 to 0.88) |
| T3 | 11 509 (391) | 0.66 (0.54 to 0.82) | 5895 (170) | 0.70 (0.56 to 0.86) |
| Moderate-to-vigorous physical activity | | | | |
| T1 (least active) | 11 481 (1206) | Reference | 5527 (491) | Reference |
| T2 | 11 502 (486) | 0.66 (0.58 to 0.74) | 5848 (214) | 0.73 (0.59 to 0.91) |
| T3 | 11 509 (342) | 0.61 (0.47 to 0.80) | 6110 (159) | 0.66 (0.52 to 0.83) |
| Sedentary time | | | | |
| T1 (least sedentary) | 11 495 (356) | Reference | 5913 (154) | Reference |
| T2 | 11 505 (535) | 0.94 (0.71 to 1.26) | 5839 (238) | 0.97 (0.67 to 1.40) |
| T3 | 11 492 (1143) | 1.31 (0.87 to 1.96) | 5733 (472) | 1.07 (0.82 to 1.40) |

n=34 492, deaths=2034 in multivariable-adjusted model, n=17 485, deaths=886 in multivariable-adjusted model restricted to never smokers. Analyses are restricted to individuals with >2 years of follow-up and excluding individuals with prevalent cardiovascular disease (CVD) or cancer at baseline. Multivariable adjustment includes age, sex (when applicable), socioeconomic status, smoking and the covariates included in each study's published final multivariable-adjusted model (see online supplemental eTable 1 for details). Moderate-to-vigorous physical activity is adjusted for sedentary time, light physical activity and sedentary time are adjusted for moderate-to-vigorous physical activity. Physical activity and sedentary time are further adjusted for BMI (continuous form) and BMI is adjusted for moderate-to-vigorous physical activity. BMI, body mass index.

robust (online supplemental eFigures 2 and 3). In individuals with obesity, the effect size for high total activity was attenuated (HR 0.87, 95% CI 0.57 to 1.33) while the effect size for high MVPA was accentuated (HR 0.69, 95% CI 0.50 to 0.95). Analysis including individuals with prevalent CVD or cancer, but with adjustment for these variables, showed a similar pattern as the main analysis, but with slightly stronger effect sizes (online supplemental eFigure 4), with descriptive characteristics for these participants in online supplemental eTable 3.

DISCUSSION

In this harmonised meta-analysis of almost 35 000 participants with device-measured physical activity, we observed an inverse dose–response relationship between higher levels of total and intensity-specific physical activity and mortality within the normal weight (BMI 18.5–25) and overweight categories (BMI 25–30). An inverse dose–response relationship within the obese category (BMI >30) was only observed for total physical activity. However, the inverse association between MVPA and mortality risk was similar in low and high waist circumference categories, suggesting a role of MVPA in determining central adiposity-related mortality. Low sedentary time was associated with lower mortality risk in those with normal weight and overweight, but not in individuals with obesity. A consistent finding was that being normal weight did not provide any survival benefits in those with low physical activity or high sedentary time, compared with the obese-low active (or high sedentary time) referent. These results support the main 2020 WHO physical activity and sedentary behaviour recommendations that all adults should undertake regular physical activity and ‘every move counts’.³²

A dose–response relationship between MVPA and risk of premature mortality within the normal weight and overweight categories largely corroborates earlier studies based on self-reported activity.^{9–11 33 34} Some of these studies^{10 11} also reported dose–response relationships for physical activity among individuals with obesity, while some did not.^{9 34} While these stratified analyses provide useful insights into physical activity prescription in population subgroups (ie, does physical activity promote longevity in those with or without obesity), they do not address the possibility that risk of poor health outcomes may be shaped by the combined exposure to both obesity and physical activity. Nor do they provide insight on whether physical activity may in fact eliminate the higher mortality risk observed with obesity.⁷ Studies examining the joint association of self-reported physical activity and adiposity have generally reported that physical activity attenuated, but did not eliminate, the increased mortality risk among individuals with obesity.^{9–11} For example, in the Nurses' Health Study, all-cause mortality risk was about 2.5 times higher among women with obesity with less than 1 hour of exercise per week that was attenuated to an HR of 1.9 among women reporting more than 3.5 hours of exercise per week, as compared with the healthy BMI-most active reference group.¹⁰ Similarly, in a recent study including about 300 000 individuals from the UK Biobank cohort, also using the healthy BMI-most active as the reference, the all-cause mortality HR among those with obesity type I (BMI 30–35) was 1.4 for the least active and 1.2 for the most active category.⁹ In this study, the most active third of total activity had an approximate 30%–40% lower risk compared with the obese-least active reference, irrespective of their BMI. Our findings are therefore in agreement with earlier studies based on self-reported MVPA, and we extend these observations by showing

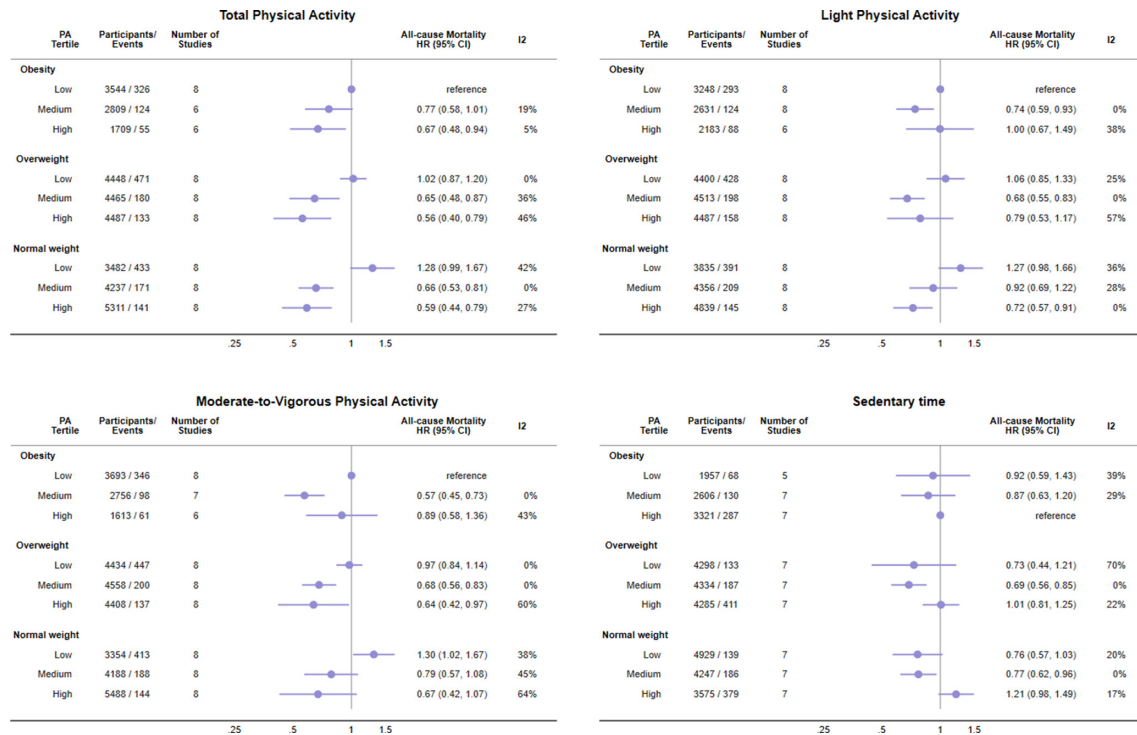


Figure 1 Joint associations of physical activity or sedentary time and body mass index (BMI) with risk of all-cause mortality. $n=34\ 492$, deaths=2034. Individuals self-reporting prevalent cardiovascular disease (CVD) or cancer are excluded. Analysis of sedentary time includes $n=33\ 552$; 1920 deaths as there were no cases in the reference category in the British Regional Heart Study. Models are adjusted for age, sex (when applicable), socioeconomic status, smoking and the covariates included in each study's published final multivariable-adjusted model (see online supplemental eTable 1 for details). Additionally, models using moderate-to-vigorous physical activity were adjusted for sedentary time (continuous form) with sedentary time and light physical activity adjusted for moderate-to-vigorous physical activity (continuous). Median activity and sedentary time in exposure categories are shown in online supplemental eTable 2. PA, physical activity.

that device-measured physical activity, irrespective of intensity, may outweigh the risk of premature mortality from obesity. We show that an overall volume of physical activity comparable with the most active third of our samples was associated with a pronounced lower mortality risk among individuals with obesity, and that even reaching a physical activity level corresponding to the second tertile may provide the majority of the survival benefit. In the nationally representative US NHANES and the Norwegian National Physical Activity Survey cohorts, the difference in non-sedentary time (LPA + MVPA, assuming 16 hours of daily awake time) between the least active and the middle third of total physical activity was between 1 and 1.5 hours/day in all BMI categories. In comparison, the difference between the least active and the middle active third of MVPA was roughly 12 min/day in the NHANES and 20 min/day in the Norwegian National Physical Activity Survey. MVPA requires an intensity equivalent to at least brisk walking and may be achieved by active transportation, walking, exercise and heavy gardening activities. In contrast, examples of LPA include casual walking, household chores, yoga or tai chi, and pétanque. Thus, physical activity can be accumulated by combining LPA and MVPA differently to promote longevity.³²

The dose-response pattern between higher BMI and mortality is not linear, but has a curvilinear slope at a BMI above 30 kg/m².⁷ The cohorts included in our study were not large enough to permit a more granular assessment of the joint associations at higher levels of BMI which may explain why we did not observe increased mortality with obesity in our sample. Further, particularly the normal weight category may be susceptible to residual confounding from disease.²⁹ This would also attenuate

the obesity-mortality association compared with normal weight and thereby impact the joint association pattern. The higher mortality risk with normal weight-low activity provides some evidence in this direction. When we restricted our analysis to never smokers this higher mortality was no longer evident, but the rest of the association pattern was robust. Yet, inference from conservative analysis of observational data and Mendelian randomisation studies suggest that a BMI below 20 may be causally associated with higher mortality risk.^{7,35} We therefore suggest that further studies on this topic perform a detailed assessment at both high (eg, >35 kg/m²) and low levels of BMI when possible. We included population-based cohorts three of which used using national sampling frames but our combined data set is selected towards women and older individuals. This could have introduced selection of individuals with healthy ageing and may impact the generalisability of the observed joint association pattern to younger adults as the obesity-mortality association weakens with advancing age.^{7,36}

We extend previous work in this data set¹² by showing the importance of the total volume of physical activity across standard categories of BMI. It is unclear why high LPA and MVPA among individuals with obesity were not associated with lower mortality risk when there was clear evidence of an association in the middle tertiles. This may reflect statistical uncertainty as individuals with obesity and high MVPA constituted the smallest proportion of the sample. Alternatively, misclassification of activity intensities could be more pronounced with obesity as the absolute accelerometer intensity thresholds do not account for individual variation in fitness. Further, the biomechanical properties of walking are affected by obesity³⁷ which may

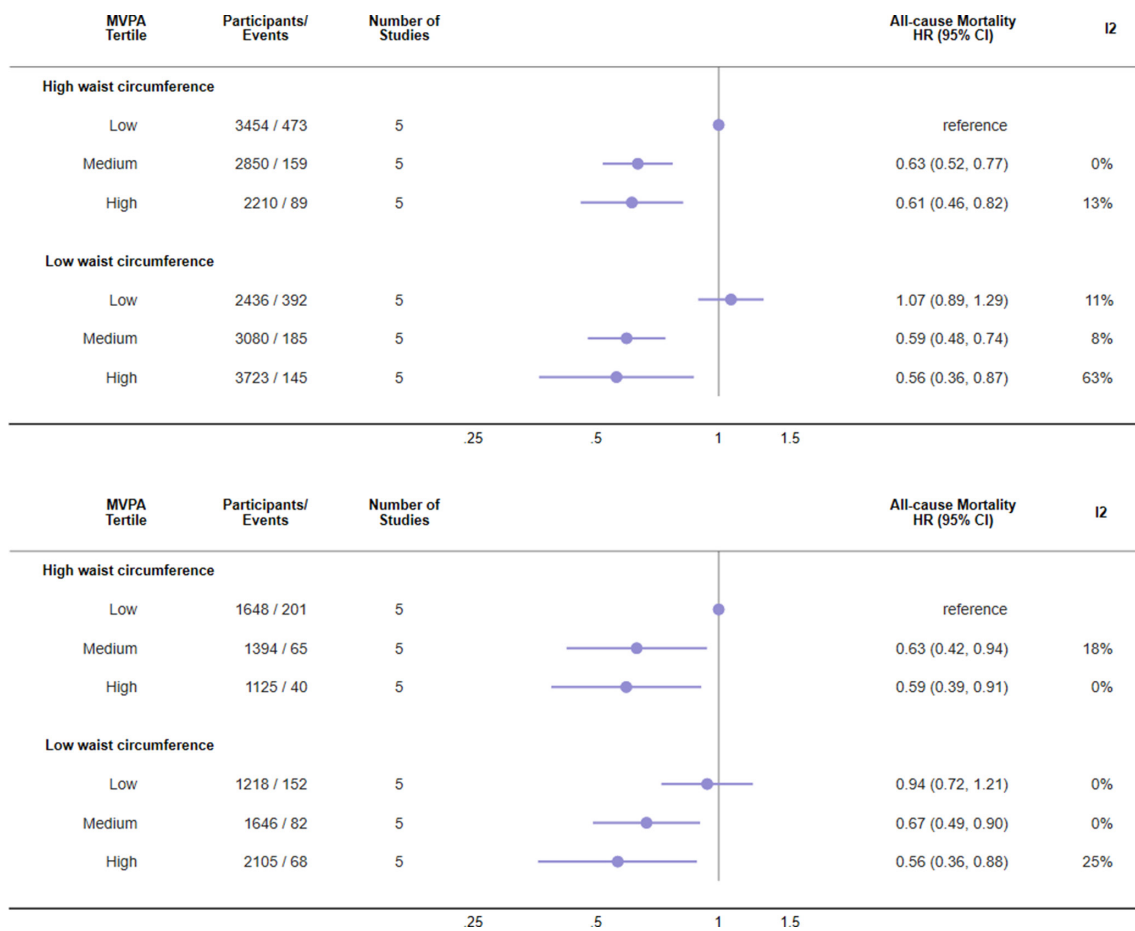


Figure 2 Joint associations of moderate-to-vigorous physical activity (MVPA) and waist circumference with risk of all-cause mortality. Top panel: excluding individuals with self-reporting prevalent cardiovascular disease (CVD) or cancer ($n=17\,773$; 1443 deaths). Bottom panel: as top panel but further restricted to never smokers ($n=9136$; 608 deaths). Both models are adjusted for age, sex (when applicable), socioeconomic status, smoking (top panel only), sedentary time (continuous) and the covariates included in each study's published final multivariable-adjusted model (see online supplemental eTable 1 for details).

also result in misclassification of LPA and MVPA. In contrast, total physical activity is cut-point invariant. A recent analysis of physical activity measured by wrist-worn accelerometry in almost 100 000 participants corroborates the importance of the total volume of activity for lowering mortality but also suggests additional benefits are accrued if the total volume is accumulated through higher intensity activity.³⁸ Importantly, high waist circumference was not associated with higher mortality risk in those with medium or high MVPA. As centrally distributed fat is considered more detrimental than subcutaneous fat,³⁹ engaging in MVPA may be particularly relevant for those with central obesity. The association between sedentary time and mortality differed from that reported in our earlier work.¹² Possible explanations include the current use of tertiles instead of quartiles, or additional follow-up time in some of the included cohorts.^{31, 40} Sedentary time was defined as absence of movement from waist-mounted or hip-mounted accelerometry and may also include time standing completely still.⁴¹ Standing may account for a large part of non-movement but would probably decrease with age and retirement from work.⁴² Hence, differences in participant demographics would influence the extent of misclassification in each cohort.

We highlight two implications of our findings for public health. First, physical activity should be promoted regardless of the weight status of individuals. Healthcare providers may be

less inclined to discuss lifestyle factors such as physical activity and diet with individuals who have a healthy body weight.^{43–45} Our results and the work of others suggest substantial benefits may accrue if physical activity levels are increased in this population.^{9, 10, 34, 46} Second, very few people with obesity succeed in achieving a sustained weight loss⁴⁷ despite this being an integral part of primary care management of obesity.⁴⁸ This is because body weight is determined by a complex relationship between multiple behavioural, environmental and genetic factors.⁴⁹ Focusing communication on the positive benefits of regular physical activity in this population, such as improved mental health,³² improved physical functioning,³² decreased reliance on medications to control cardiometabolic risk markers⁴⁵ and lower mortality risk, irrespective of any concurrent weight loss, may help send a more positive message.

Our findings should be interpreted in the light of several limitations. BMI is not a direct measure of body fat and may misclassify individuals with high lean mass into the overweight or obese categories. This bias could potentially inflate estimates of the benefits of higher activity in these categories. We used sample-specific tertiles to categorise physical activity variables. The largest mortality benefits are observed with small differences at the lower end of the activity spectrum,³² and these nuances may not be fully captured with tertiles. We excluded individuals with prevalent CVD or cancer as well as deaths within the first

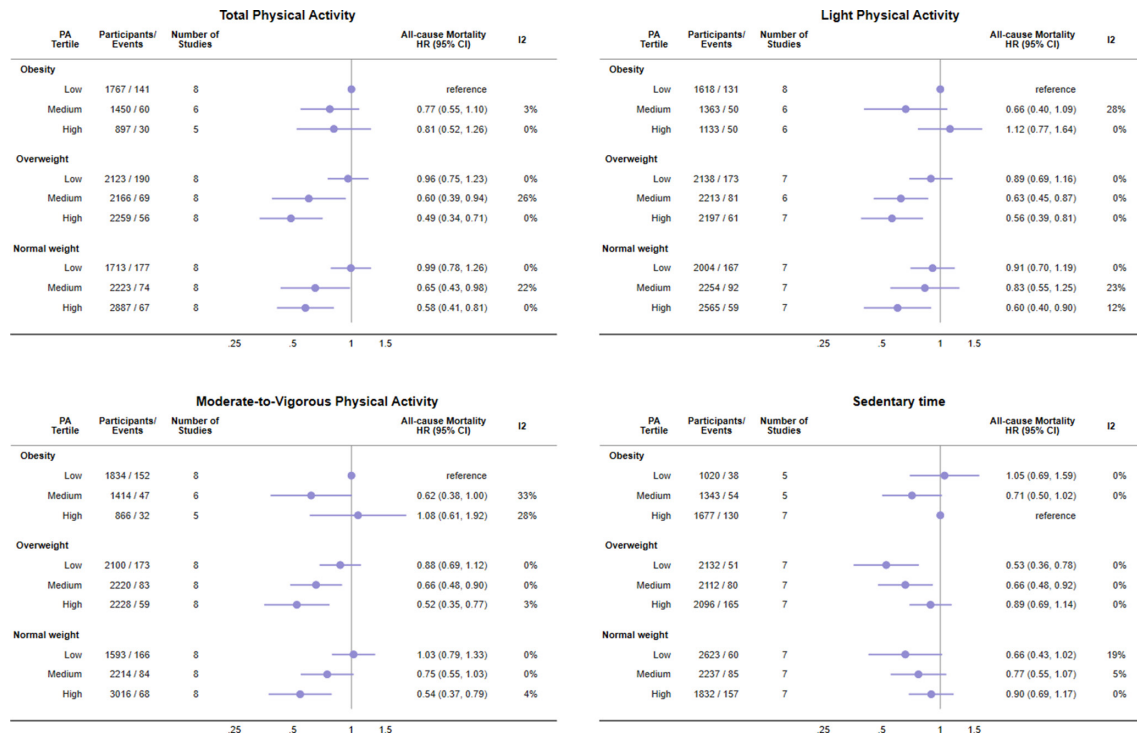


Figure 3 Joint associations of physical activity or sedentary time and body mass index (BMI) with risk of all-cause mortality in never smokers. n=17 485, deaths=864. Analysis of sedentary time includes n=17 072; 820 deaths as there were no cases in the reference category in the British Regional Heart Study. Individuals self-reporting prevalent cardiovascular disease (CVD) or cancer are excluded. Models are adjusted for age, sex (when applicable), socioeconomic status and the covariates included in each study's published final multivariable-adjusted model (see online supplemental eTable 1 for details). Additionally, models using moderate-to-vigorous physical activity were adjusted for sedentary time (continuous form) with sedentary time and light physical activity adjusted for moderate-to-vigorous physical activity (continuous). PA, physical activity.

What are the findings?

- ⇒ Higher device-measured physical activity was associated with a lower risk of mortality irrespective of weight status.
- ⇒ Compared with obesity, there were no survival benefits of having a normal weight if physical activity levels were low.
- ⇒ Lower levels of sedentary time were associated with lower mortality risk in normal weight and overweight individuals but there was no association between sedentary time and risk of mortality in those who were obese.

How might it impact on clinical practice in the future?

- ⇒ Physical activity should be promoted irrespective of an individual's weight status.
- ⇒ Promoting even small increases in daily physical activity should be a cornerstone of obesity management, irrespective of any concomitant changes in body weight.

2 years of follow-up to reduce the risk of prevalent or subclinical conditions being a cause of lower activity and/or adiposity which would bias our results. However, it is possible that this time frame is insufficient to fully remove this bias^{7 31} and we were not able to exclude individuals with prevalent cancer in the REGARDS cohort as these data were not collected. Our analysis is based on the constant exposure assumption as we were unable to account for changes in physical activity or BMI over time. Careful modelling of changes in exposure over time in relation

to later health outcomes should be a priority in future studies.⁵⁰ We included cohorts from high-income western countries with distinct physical activity patterns and a high prevalence of obesity which may limit generalisability of the results to low and middle-income countries. Finally, as a meta-analysis of observational studies, residual biases from selection, measurement error or confounding cannot be refuted.

In summary, higher physical activity was associated with lower risk of mortality irrespective of weight status. Compared with obesity-low physical activity, there was no survival benefit of being normal weight if physical activity levels were low. Clinicians, communities and public health specialists should promote physical activity for longevity irrespective of weight status.

Author affiliations

- ¹Department of Sports Medicine, Norwegian School of Sports Sciences, Oslo, Norway
- ²Department of Sport Science and Physical Education, University of Agder, Kristiansand, Norway
- ³Primary Care and Population Health, University College London, London, UK
- ⁴Population Health Research Institute, St George's University of London, London, UK
- ⁵Department of Medicine, Center for Behavioral Cardiovascular Health, Columbia University Medical Center, New York, New York, USA
- ⁶College of Health and Human Services, San Diego State University, San Diego, California, USA
- ⁷Department of Epidemiology, School of Public Health, University of Alabama at Birmingham, Birmingham, Alabama, USA
- ⁸Department of Biostatistics, Boston University School of Public Health, Boston, Massachusetts, USA
- ⁹Department of Endocrinology, Diabetes, Nutrition and Weight Management, Boston University School of Medicine, Boston, Massachusetts, USA
- ¹⁰Departments of Medicine and Epidemiology, Boston University School of Medicine and Boston University School of Public Health, Boston, Massachusetts, USA
- ¹¹Department of Neurobiology, Care Sciences and Society, Karolinska Institutet, Stockholm, Sweden

¹²Academic Primary Health Care Centre, Region Stockholm, Stockholm, Sweden
¹³Diabetes Research Centre, College of Life Sciences, University of Leicester, Leicester, UK
¹⁴NIHR Leicester Biomedical Research Centre, University Hospitals of Leicester NHS Trust, Leicester, UK
¹⁵Laboratory of Epidemiology and Population Sciences, National Institute on Aging, Bethesda, Maryland, USA
¹⁶MRC Epidemiology Unit, University of Cambridge, Cambridge, UK
¹⁷Physical Activity and Behavioural Epidemiology Laboratories, Baker Heart and Diabetes Institute, Melbourne, Victoria, Australia
¹⁸Department of Epidemiology, Harvard T H Chan School of Public Health, Boston, Massachusetts, USA
¹⁹Department of Medicine, Brigham and Women's Hospital and Harvard Medical School, Boston, Massachusetts, USA
²⁰Department of Chronic Diseases and Ageing, Norwegian Institute of Public Health, Oslo, Norway

Twitter Barbara J Jefferis @PARG3 and Paddy C Dempsey @PC_Dempsey

Contributors JT, UE and MWF had full access to the cohort-specific data and take full responsibility for the integrity of the data and the accuracy of the meta-analyses. Study concept and design: JT, UE, MWF, I-ML. Acquisition of data: all authors. Analysis and interpretation of pooled data: JT, UE, KED, BHH, MWF, JSJ, SAA, I-ML. Drafting of the manuscript: JT, UE. Critical revision of the manuscript for important intellectual content: all authors. Statistical analysis of pooled data: MWF, JT. Statistical analysis of individual studies: JT, BJJ, PCD, AC, KMD, I-MD. Study supervision: UE. JT is the study guarantor.

Funding The ABC study was funded by the Stockholm County Council, the Swedish National Centre for Research in Sports and the project ALPHA, which received funding from the European Union in the framework of the Public Health Programme and Folksam Research Foundation, Sweden. The British Regional Heart Study was funded by project and programme grants from the British Heart Foundation (PG/13/86/30546, RG/13/16/30528). The EPIC-Norfolk study has received funding from the UK Medical Research Council (MR/N003284/1), Cancer Research UK (C864/A14136) and the NIHR Biomedical Research Centre in Cambridge (IS-BRC-1215-20014). PCD is supported by a National Health and Medical Research Council of Australia Research Fellowship (1142685), and PCD and KW by the UK Medical Research Council (MC_UU_12015/3, MC_UU_00006/4, MC_UU_12015/3). The Framingham Heart Study's data collection and analysis was funded by the National Institutes of Health (NIH), the National Heart, Lung, and Blood Institute (NHLBI) (N01-HC25195, HHSN2682015000011, 75N92019D00031) and grant from the National Institute on Aging (R01AG047645), Health and Human Services (HHS) (N2682015000011, R01-AG047645, R01-HL131029) and the American Heart Association (15GPGSGC24800006). The Norwegian National Physical Activity Surveillance Study was supported by the Norwegian Directorate for Public Health and the Norwegian School of Sport Sciences. JT is funded by the Research Council of Norway (249932/F20). The REGARDS study was supported by a cooperative agreement (U01-NS041588) cofunded by the National Institute of Neurological Disorders and Stroke and the National Institute on Aging of the NIH. Additional funding was provided by an investigator-initiated grant (R01-NS061846) from the National Institute of Neurological Disorders and Stroke of the NIH and an unrestricted research grant from the Coca-Cola. The Women's Health Study was funded by the NIH grants (CA154647, CA047988, CA182913, HL043851, HL080467, HL099355). EJS was supported by the intramural research programme at the National Institute on Aging.

Competing interests None declared.

Patient consent for publication Not required.

Ethics approval Ethics approval was obtained by the original study groups. Ethical approval has been granted for all individual studies but was not required for this meta-analysis.

Provenance and peer review Not commissioned; externally peer reviewed.

Data availability statement Data are available on reasonable request. The study-specific summary data included in the meta-analyses can be obtained from the corresponding authors; jtar@clin.au.dk.

Supplemental material This content has been supplied by the author(s). It has not been vetted by BMJ Publishing Group Limited (BMJ) and may not have been peer-reviewed. Any opinions or recommendations discussed are solely those of the author(s) and are not endorsed by BMJ. BMJ disclaims all liability and responsibility arising from any reliance placed on the content. Where the content includes any translated material, BMJ does not warrant the accuracy and reliability of the translations (including but not limited to local regulations, clinical guidelines, terminology, drug names and drug dosages), and is not responsible for any error and/or omissions arising from translation and adaptation or otherwise.

Open access This is an open access article distributed in accordance with the Creative Commons Attribution Non Commercial (CC BY-NC 4.0) license, which permits others to distribute, remix, adapt, build upon this work non-commercially, and license their derivative works on different terms, provided the original work is properly cited, appropriate credit is given, any changes made indicated, and the use is non-commercial. See: <http://creativecommons.org/licenses/by-nc/4.0/>.

ORCID iDs

Jakob Tarp <http://orcid.org/0000-0002-9186-7077>
 Barbara J Jefferis <http://orcid.org/0000-0002-0850-3177>
 Keith M Diaz <http://orcid.org/0000-0003-0190-0548>
 Ing-Mari Dohrn <http://orcid.org/0000-0003-2593-550X>
 Thomas Yates <http://orcid.org/0000-0002-5724-1718>
 Paddy C Dempsey <http://orcid.org/0000-0002-1714-6087>
 I-Min Lee <http://orcid.org/0000-0002-1083-6907>

REFERENCES

- Guthold R, Stevens GA, Riley LM, *et al.* Worldwide trends in insufficient physical activity from 2001 to 2016: a pooled analysis of 358 population-based surveys with 1.9 million participants. *Lancet Glob Health* 2018;6:e1077–86.
- NCD Risk Factor Collaboration (NCD-RisC). Worldwide trends in body-mass index, underweight, overweight, and obesity from 1975 to 2016: a pooled analysis of 2416 population-based measurement studies in 128.9 million children, adolescents, and adults. *Lancet* 2017;390:2627–42.
- Donnelly JE, Honas JJ, Smith BK, *et al.* Aerobic exercise alone results in clinically significant weight loss for men and women: Midwest exercise trial 2. *Obesity* 2013;21:E219–28.
- Church TS, Earnest CP, Skinner JS, *et al.* Effects of different doses of physical activity on cardiorespiratory fitness among sedentary, overweight or obese postmenopausal women with elevated blood pressure. *JAMA* 2007;297:2081–91.10.1001/jama.297.19.2081
- Global Burden of Metabolic Risk Factors for Chronic Diseases Collaboration (BMI Mediated Effects), Lu Y, Hajifathalian K, *et al.* Metabolic mediators of the effects of body-mass index, overweight, and obesity on coronary heart disease and stroke: a pooled analysis of 97 prospective cohorts with 1.8 million participants. *Lancet* 2014;383:970–83.
- World Health Organization. A healthy lifestyle 2020.
- Di Angelantonio E, Bhupathiraju SN, Wormser D, *et al.* Body-Mass index and all-cause mortality: individual-participant-data meta-analysis of 239 prospective studies in four continents. *The Lancet* 2016;388:776–86.
- Flegal KM, Ioannidis JPA, Doehner W. Flawed methods and inappropriate conclusions for health policy on overweight and obesity: the global BMI mortality collaboration meta-analysis. *J Cachexia Sarcopenia Muscle* 2019;10:9–13.
- Sanchez-Lastra MA, Ding D, Dalene K-E, *et al.* Physical activity and mortality across levels of adiposity: a prospective cohort study from the UK Biobank. *Mayo Clin Proc* 2021;96:105–19.
- Hu FB, Willett WC, Li T, *et al.* Adiposity as compared with physical activity in predicting mortality among women. *N Engl J Med* 2004;351:2694–703.
- Koster A, Harris TB, Moore SC, *et al.* Joint associations of adiposity and physical activity with mortality: the National Institutes of Health-AARP diet and health study. *Am J Epidemiol* 2009;169:1344–51.
- Ekelund U, Tarp J, Steene-Johannessen J, *et al.* Dose-Response associations between accelerometer measured physical activity and sedentary time and all cause mortality: systematic review and harmonised meta-analysis. *BMJ* 2019;366:l4570.
- Ekelund U, Tarp J, Fagerland MW, *et al.* Joint associations of accelerometer-measured physical activity and sedentary time with all-cause mortality: a harmonised meta-analysis in more than 44 000 middle-aged and older individuals. *Br J Sports Med* 2020;54:1499–506.
- Dempsey PC, Strain T, Khaw K-T, *et al.* Prospective associations of Accelerometer-Measured physical activity and sedentary time with incident cardiovascular disease, cancer, and all-cause mortality. *Circulation* 2020;141:1113–5.
- Banack HR, Kaufman JS. The "Obesity Paradox" Explained. *Epidemiology* 2013;24:461–2.
- Diaz KM, Howard VJ, Hutto B, *et al.* Patterns of sedentary behavior and mortality in U.S. middle-aged and older adults: a national cohort study. *Ann Intern Med* 2017;167:465–75.
- Dohrn I-M, Sjöström M, Kwak L, *et al.* Accelerometer-measured sedentary time and physical activity-A 15 year follow-up of mortality in a Swedish population-based cohort. *J Sci Med Sport* 2018;21:702–7.
- Jefferis BJ, Parsons TJ, Sartini C, *et al.* Objectively measured physical activity, sedentary behaviour and all-cause mortality in older men: does volume of activity matter more than pattern of accumulation? *Br J Sports Med* 2019;53:1013–20.
- Lee I-M, Shiroma EJ, Evenson KR, *et al.* Accelerometer-Measured physical activity and sedentary behavior in relation to all-cause mortality: the women's health study. *Circulation* 2018;137:203–5.
- Johnson CL, Paulose-Ram R, Ogden CL. National health and nutrition examination survey: Analytic guidelines, 1999-2010. *Vital Health Stat* 2013;1–24.

- 21 Spartano NL, Lyass A, Larson MG, *et al.* Objective physical activity and physical performance in middle-aged and older adults. *Exp Gerontol* 2019;119:203–11.
- 22 Hansen BH, Kolle E, Dyrstad SM, *et al.* Accelerometer-determined physical activity in adults and older people. *Med Sci Sports Exerc* 2012;44:266–72.
- 23 Choi L, Liu Z, Matthews CE, *et al.* Validation of accelerometer wear and nonwear time classification algorithm. *Med Sci Sports Exerc* 2011;43:357–64.
- 24 Freedson PS, Melanson E, Sirard J. Calibration of the computer science and applications, Inc. accelerometer. *Med Sci Sports Exerc* 1998;30:777–81.
- 25 Colley RC, Tremblay MS. Moderate and vigorous physical activity intensity cut-points for the Actical accelerometer. *J Sports Sci* 2011;29:783–9.
- 26 Matthews CE, Keadle SK, Troiano RP, *et al.* Accelerometer-measured dose-response for physical activity, sedentary time, and mortality in US adults. *Am J Clin Nutr* 2016;104:1424–32.
- 27 Wong SL, Colley R, Connor Gorber S, *et al.* Actical accelerometer sedentary activity thresholds for adults. *J Phys Act Health* 2011;8:587–91.
- 28 Diaz KM, Goldsmith J, Greenlee H, *et al.* Prolonged, uninterrupted sedentary behavior and glycemic biomarkers among US Hispanic/Latino adults: the HCHS/SOL (Hispanic community health Study/Study of Latinos). *Circulation* 2017;136:1362–73.
- 29 Sattar N, Preiss D. Reverse causality in cardiovascular epidemiological research: more common than imagined? *Circulation* 2017;135:2369–72.
- 30 Strain T, Wijndaele K, Sharp SJ, *et al.* Impact of follow-up time and analytical approaches to account for reverse causality on the association between physical activity and health outcomes in UK Biobank. *Int J Epidemiol* 2020;49:162–72.
- 31 Tarp J, Hansen BH, Fagerland MW, *et al.* Accelerometer-measured physical activity and sedentary time in a cohort of US adults followed for up to 13 years: the influence of removing early follow-up on associations with mortality. *Int J Behav Nutr Phys Act* 2020;17:39.
- 32 Bull FC, Al-Ansari SS, Biddle S, *et al.* World Health organization 2020 guidelines on physical activity and sedentary behaviour. *Br J Sports Med* 2020;54:1451–62.
- 33 Katzmarzyk PT, Craig CL. Independent effects of waist circumference and physical activity on all-cause mortality in Canadian women. *Appl Physiol Nutr Metab* 2006;31:271–6.
- 34 Ekelund U, Ward HA, Norat T, *et al.* Physical activity and all-cause mortality across levels of overall and abdominal adiposity in European men and women: the European prospective investigation into cancer and nutrition study (EPIC). *Am J Clin Nutr* 2015;101:613–21.
- 35 Sun Y-Q, Burgess S, Staley JR, *et al.* Body mass index and all cause mortality in Hunt and UK Biobank studies: linear and non-linear Mendelian randomisation analyses. *BMJ* 2019;894:l1042. doi:10.1136/bmj.l1042
- 36 Yi S-W, Ohrr H, Shin S-A, *et al.* Sex-age-specific association of body mass index with all-cause mortality among 12.8 million Korean adults: a prospective cohort study. *Int J Epidemiol* 2015;44:1696–705.
- 37 Pisanu S, Deledda A, Loviselli A, *et al.* Validity of Accelerometers for the evaluation of energy expenditure in obese and overweight individuals: a systematic review. *J Nutr Metab* 2020;2020:1–22.
- 38 Strain T, Wijndaele K, Dempsey PC, *et al.* Wearable-device-measured physical activity and future health risk. *Nat Med* 2020;26:1385–91.
- 39 Després J-P. Body fat distribution and risk of cardiovascular disease. *Circulation* 2012;126:1301–13.
- 40 Rezende LFM, Lee DH, Ferrari G, *et al.* Confounding due to pre-existing diseases in epidemiologic studies on sedentary behavior and all-cause mortality: a meta-epidemiologic study. *Ann Epidemiol* 2020;52:7–14.
- 41 Hamer M, Stamatakis E, Chastin S, *et al.* Feasibility of measuring sedentary time using data from a Thigh-Worn Accelerometer. *Am J Epidemiol* 2020;189:963–71.
- 42 Bakrania K, Edwardson CL, Khunti K, *et al.* Associations of objectively measured moderate-to-vigorous-intensity physical activity and sedentary time with all-cause mortality in a population of adults at high risk of type 2 diabetes mellitus. *Prev Med Rep* 2017;5:285–8.
- 43 Jones PR, Brooks JHM, Wylie A. Realising the potential for an Olympic legacy; teaching medical students about sport and exercise medicine and exercise prescribing. *Br J Sports Med* 2013;47:1090–4.
- 44 Hébert ET, Caughy MO, Shuval K. Primary care providers' perceptions of physical activity counselling in a clinical setting: a systematic review. *Br J Sports Med* 2012;46:625–31.
- 45 Lobelo F, Rohm Young D, Sallis R, *et al.* Routine assessment and promotion of physical activity in healthcare settings: a scientific statement from the American heart association. *Circulation* 2018;137:e495–522.
- 46 Mok A, Khaw K-T, Luben R, *et al.* Physical activity trajectories and mortality: population based cohort study. *BMJ* 2019;365:l2323.
- 47 Fildes A, Charlton J, Rudisill C, *et al.* Probability of an obese person attaining normal body weight: cohort study using electronic health records. *Am J Public Health* 2015;105:e54–9.
- 48 American College of Cardiology/American Heart Association Task Force on Practice Guidelines, Obesity Expert Panel, 2013. Executive summary: guidelines (2013) for the management of overweight and obesity in adults: a report of the American College of Cardiology/American heart association Task force on practice guidelines and the obesity Society published by the obesity Society and American College of Cardiology/ American heart association Task force on practice guidelines. based on a systematic review from the the obesity expert panel, 2013. *Obesity* 2014;22 Suppl 2:S5–39.
- 49 Wharton S, Lau DCW, Vallis M, *et al.* Obesity in adults: a clinical practice guideline. *Can Med Assoc J* 2020;192:E875–91.
- 50 Yang Y, Dixon-Suen SC, Dugué P-A, *et al.* Physical activity and sedentary behaviour over adulthood in relation to all-cause and cause-specific mortality: a systematic review of analytic strategies and study findings. *Int J Epidemiol* 2021;62:dyab181.

Online-Only Supplement

eTable 1. Description of cohorts

eTable 2. Physical activity levels across combinations of physical activity and BMI

eFigure 1. Joint associations of physical activity or sedentary time and BMI and risk of all-cause mortality without control for other physical activity behaviors

eFigure 2. Joint associations of physical activity or sedentary time and BMI and risk of all-cause mortality, excluding the REGARDS cohort

eFigure 3. Joint associations of physical activity or sedentary time and BMI and risk of all-cause mortality, cohorts with measured BMI

eFigure 4. Joint associations of physical activity or sedentary time and BMI and risk of all-cause mortality, including individuals with self-reported prevalent CVD or cancer at start of follow-up

eTable 3. Descriptive characteristics of cohorts, including participants with self-reported prevalent CVD cancer.

eTable 1. Description of cohorts

| Study | Participants; cases; year of (accelerometer) baseline assessment; follow-up years (mean) | BMI obtained by; waist circumference obtained by | Definitions used to exclude individuals with prevalent CVD or cancer | Case ascertainment | Accelerometer-device and method | Covariates available in multivariable-adjusted model |
|---|---|---|---|--|--|--|
| REasons for Geographical and Racial differences in Stroke (REGARDS), US | 6381; 701; 2003-07; 7.8 | BMI and waist circumference measured by trained staff | Self-reported or ECG evidence of myocardial infarction or a self-reported coronary revascularization procedure | Review of death certificates, medical records, and administrative databases. Censoring data was 16-March-2020. | Actical (right hip) | Age, sex, education, race, region of residence, season the accelerometer was worn, current smoking, alcohol use, diabetes, hypertension, dyslipidemia, estimated glomerular filtration rate, atrial filtration |
| Sweden Attitude, Behaviour and Change study (ABC), Sweden | 770; 67; 2001-02; 14.5 | Self-report; not available | Self-reported history of hypertension, heart disease, cancer, or diabetes | National death register. Censoring data was 31-December-2015. | Actigraph 7164 (lower back) | Age, sex, education, smoking |
| British Regional Heart Study (BRHS), UK | 940; 114; 2010-12; 6.0 | BMI and waist circumference measured by trained staff | Self-reported ever receiving a doctor diagnosis of heart attack, heart failure or stroke (with symptoms lasting >24hours) or cancer (not including non-melanoma skin cancers) | National Health Service central registers. Censoring data was 1-June-2016. | Actigraph GT3X (right hip) | Age, season of accelerometer wear, region of residence, lives alone/with others, alcohol, smoking, sleep, locomotor disability, diabetes |
| Women's Health Study (WHS), US | 13,968; 438; 2011-17; 6.3 | Self-report; not available | Self-reported MI, stroke, or cancer (not including non-melanoma skin cancers). Confirmed by medical record review. | Medical records, death certificates, or the National Death Index. Censoring data was 31-December-2019. | Actigraph GT3X+ (right hip) | Age, income, smoking, alcohol, intakes of saturated fat, fibre, fruits, and vegetables, hormone therapy, parental history of MI, family history of cancer, general health, and cancer screening |

| | | | | | | |
|---|-----------------------------|---|--|---|--|---|
| Framingham Heart Study (FHS), US | 3009; 56; 2008-11; 7.0 | BMI and waist circumference measured by trained staff | Adjudicated by a panel of physicians. Myocardial infarction, angina pectoris, coronary insufficiency, coronary heart disease death, stroke, intermittent claudication, coronary heart failure, or any cancer | Medical records, death certificates. Censoring data was 31-December-2017. | Actical (right hip) | Age, sex, education, BMI, ethnicity, smoking, self-reported health |
| National Health and Nutrition Examination Study (NHANES), US | 2832; 358; 2003-06; 10.5 | BMI and waist circumference measured by trained staff | Self-reported congestive heart failure, coronary heart disease, angina pectoris, heart attack, stroke or any cancer | National Death Index, National Center for Health Statistics. Censoring data was 31-December-2016. | Actigraph 7164 (right hip) | Age, sex, education, ethnicity, smoking, alcohol, mobility limitations, diabetes |
| Norwegian National Physical Activity Survey (NNPAS) | 1928; 66; 2008-09; 8.9 | Self-report; not available | Self-reported myocardial infarction, angina pectoris, stroke or any cancer | Death certificates, Norwegian death register. Censoring data was 31-December-2017. | Actigraph GT1M (right hip) | Age, sex, education, smoking alcohol, diabetes |
| The European Prospective Investigation into Cancer and Nutrition (EPIC) Norfolk, UK | 4667; 234; 2004-18; 6.7 | BMI and waist circumference measured by trained staff | Self-reported and hospital data on myocardial infarction, stroke, or any cancer | Death certificates, Office for National Statistics. Censoring date was 31-March-2018. | Actigraph GT1M and GT3X+ (harmonized, right hip) | Age, sex, education, social class, smoking, alcohol, diabetes, anti-hypertensive drugs, lipid lowering drugs, anti-depression drugs, family history of heart attack, stroke, diabetes or cancer |

CVD; cardiovascular disease, ECG; electrocardiography, M; myocardial infarction

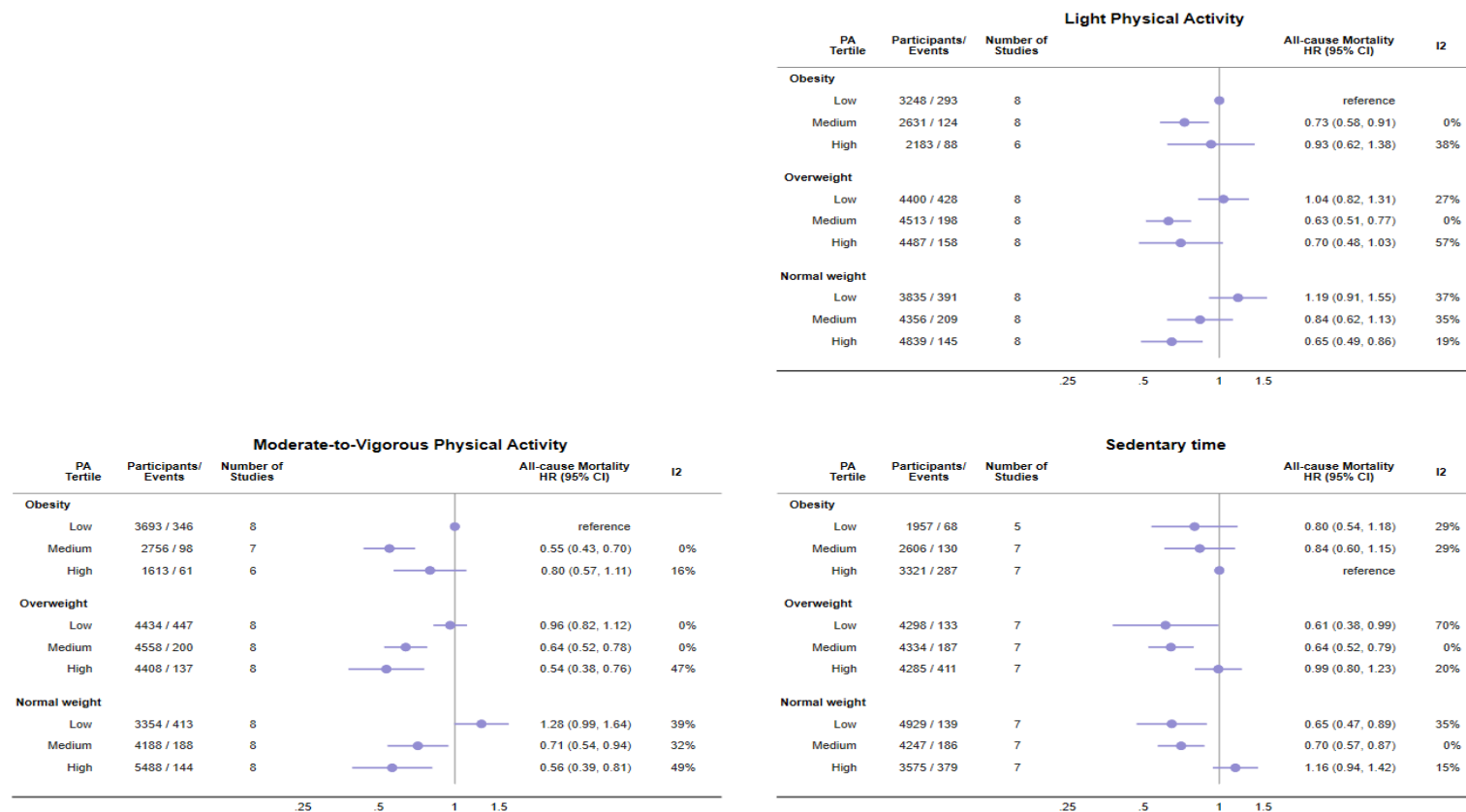
eTable 2. Physical activity (medians (interquartile range)) levels across combinations of physical activity and BMI

| | NNPAS | ABC | EPIC-NORFOLK | BRHS | FHS | REGARDS | NHANES | WHS | Median of medians* |
|---|-------------|-------------|--------------|-------------|------------|-------------|-------------|-------------|--------------------|
| Total Physical Activity (CPM) | | | | | | | | | |
| Normal weight – low total activity | 217 (86) | 219 (73) | 158 (62) | 95 (46) | 80 (29) | 36 (23) | 180 (66) | 124 (49) | 169 |
| Normal weight – medium total activity | 321 (47) | 318 (49) | 247 (46) | 179 (49) | 135 (27) | 78 (25) | 272 (54) | 210 (41) | 260 |
| Normal weight – high total activity | 457 (130) | 493 (135) | 367 (114) | 322 (134) | 239 (115) | 157 (83) | 442 (155) | 345 (101) | 405 |
| Overweight – low total activity | 214 (70) | 220 (78) | 156 (56) | 94 (46) | 79 (37) | 38 (20) | 173 (61) | 126 (47) | 165 |
| Overweight – medium total activity | 310 (49) | 314 (51) | 243 (43) | 175 (42) | 134 (30) | 78 (24) | 274 (47) | 209 (40) | 259 |
| Overweight – high total activity | 445 (111) | 438 (129) | 361 (103) | 290 (101) | 222 (87) | 152 (68) | 430 (134) | 338 (92) | 396 |
| Obese – low total activity | 198 (80) | 185 (78) | 145 (60) | 90 (46) | 77 (35) | 37 (20) | 174 (60) | 123 (48) | 160 |
| Obese – medium total activity | 317 (62) | 312 (34) | 241 (43) | 177 (46) | 135 (29) | 76 (24) | 271 (49) | 209 (43) | 256 |
| Obese – high total activity | 435 (105) | 431 (85) | 350 (99) | 258 (61) | 211 (66) | 141 (60) | 394 (100) | 321 (73) | 372 |
| Light Physical Activity (%/day) | | | | | | | | | |
| Normal weight – low LPA | 25.5 (5.0) | 29.0 (5.6) | 24.0 (4.9) | 18.0 (3.7) | 15.1 (3.7) | 9.8 (5.2) | 30.1 (6.2) | 23.4 (5.3) | 24.8 |
| Normal weight – medium LPA | 32.2 (3.3) | 38.0 (4.7) | 30.6 (3.2) | 26.0 (3.4) | 20.6 (3.0) | 16.6 (3.1) | 40.2 (5.4) | 31.9 (3.4) | 32.0 |
| Normal weight – high LPA | 41.6 (6.0) | 47.8 (6.8) | 38.5 (5.8) | 34.0 (6.7) | 27.8 (5.9) | 24.8 (6.4) | 49.8 (8.0) | 41.6 (6.4) | 41.6 |
| Overweight – low LPA | 24.9 (5.5) | 29.9 (6.4) | 23.7 (5.0) | 19.0 (4.2) | 14.8 (4.0) | 9.9 (4.5) | 29.2 (7.1) | 23.4 (5.4) | 24.3 |
| Overweight – medium LPA | 32.5 (3.5) | 37.9 (4.9) | 30.6 (3.1) | 25.9 (3.4) | 20.7 (3.0) | 16.9 (3.3) | 39.5 (4.8) | 31.8 (3.6) | 32.2 |
| Overweight – high LPA | 41.6 (6.3) | 48.0 (5.6) | 38.1 (5.8) | 34.0 (5.8) | 28.2 (6.4) | 24.6 (6.0) | 50.5 (7.2) | 41.5 (6.2) | 41.6 |
| Obese – low LPA | 24.6 (7.0) | 28.9 (8.3) | 22.4 (5.8) | 18.6 (5.4) | 14.6 (4.1) | 9.9 (4.9) | 29.7 (7.1) | 22.6 (6.2) | 23.6 |
| Obese – medium LPA | 32.3 (3.2) | 38.7 (3.0) | 30.5 (2.9) | 25.4 (3.3) | 20.8 (2.7) | 16.5 (3.0) | 39.7 (4.3) | 31.8 (3.4) | 32.1 |
| Obese – high LPA | 40.7 (5.7) | 46.9 (4.7) | 38.4 (6.1) | 32.7 (5.1) | 28.3 (5.6) | 24.6 (6.1) | 50.0 (7.9) | 41.0 (5.4) | 40.9 |
| Moderate-to-Vigorous Physical Activity (%/day) | | | | | | | | | |
| Normal weight – low MVPA | 1.54 (1.32) | 1.49 (1.06) | 1.41 (1.08) | 0.22 (0.27) | 0.4 (0.4) | 0.01 (0.04) | 0.44 (0.44) | 0.23 (0.24) | 0.42 |
| Normal weight – medium MVPA | 3.56 (1.02) | 2.98 (1.14) | 3.41 (1.13) | 1.38 (0.71) | 1.5 (0.8) | 0.34 (0.35) | 1.75 (0.98) | 1.12 (0.65) | 1.63 |
| Normal weight – high MVPA | 6.67 (2.56) | 6.17 (2.87) | 6.59 (2.79) | 4.32 (2.55) | 3.7 (2.3) | 2.12 (2.13) | 4.72 (2.99) | 3.89 (2.17) | 4.52 |
| Overweight – low MVPA | 1.74 (1.17) | 1.18 (1.09) | 1.35 (1.05) | 0.20 (0.27) | 0.3 (0.5) | 0.00 (0.04) | 0.41 (0.41) | 0.23 (0.23) | 0.41 |
| Overweight – medium MVPA | 3.56 (0.90) | 3.04 (1.01) | 3.37 (1.11) | 1.27 (0.76) | 1.4 (0.7) | 0.31 (0.33) | 1.76 (0.87) | 1.09 (0.62) | 1.58 |
| Overweight – high MVPA | 6.34 (2.47) | 5.75 (2.31) | 6.38 (2.78) | 3.67 (2.31) | 3.5 (2.0) | 2.00 (1.92) | 4.55 (2.99) | 3.64 (1.92) | 4.11 |
| Obese – low MVPA | 1.18 (1.32) | 0.71 (1.05) | 1.14 (1.10) | 0.13 (0.29) | 0.4 (0.5) | 0.00 (0.03) | 0.49 (0.46) | 0.24 (0.22) | 0.49 |
| Obese – medium MVPA | 3.31 (1.09) | 2.66 (0.83) | 3.20 (1.14) | 1.39 (0.82) | 1.4 (0.7) | 0.27 (0.31) | 1.75 (0.97) | 1.02 (0.61) | 1.58 |
| Obese – high MVPA | 5.49 (2.45) | 5.64 (2.11) | 6.07 (2.58) | 3.47 (1.43) | 3.3 (1.5) | 1.71 (1.61) | 4.03 (1.87) | 3.34 (1.59) | 3.75 |
| Sedentary time (%/day) | | | | | | | | | |
| Normal weight – low sedentary | 53.7 (6.4) | 47.9 (7.1) | 56.7 (6.7) | 62.5 (6.3) | 69.1 (6.9) | 73.5 (7.2) | 45.5 (8.9) | 55.9 (7.2) | 54.8 |

| | | | | | | | | | |
|----------------------------------|-------------|-------------|------------|------------|------------|------------|------------|------------|------|
| Normal weight – medium sedentary | 63.5 (3.3) | 58.5 (4.4) | 65.2 (3.6) | 72.0 (3.9) | 77.2 (2.9) | 82.3 (3.6) | 58.1 (5.4) | 66.4 (3.7) | 64.4 |
| Normal weight – high sedentary | 70.7 (5.6) | 67.9 (5.5) | 72.8 (5.6) | 80.5 (5.2) | 83.2 (4.1) | 90 (5.4) | 68.1 (6.2) | 75.6 (5.8) | 71.8 |
| Overweight – low sedentary | 53.9 (6.8) | 48.3 (6.5) | 56.8 (6.8) | 63.1 (6.5) | 69.3 (6.7) | 74.1 (6.4) | 46.0 (8.1) | 56.1 (6.6) | 55.0 |
| Overweight – medium sedentary | 63.4 (3.6) | 58.7 (4.4) | 65.6 (3.6) | 72.1 (4.1) | 77.3 (3.0) | 82.3 (3.3) | 58.3 (4.8) | 66.4 (3.9) | 64.5 |
| Overweight – high sedentary | 71.3 (6.0) | 66.7 (7.6) | 73.5 (5.7) | 80.8 (4.3) | 83.7 (4.5) | 89.8 (4.8) | 68.8 (7.7) | 75.6 (5.9) | 72.4 |
| Obese – low sedentary | 55.1 (6.2) | 48.9 (6.3) | 57.0 (6.4) | 64.9 (4.2) | 69.5 (5.7) | 73.9 (6.3) | 46.6 (9.4) | 57.1 (5.4) | 56.1 |
| Obese – medium sedentary | 62.7 (4.2) | 57.7 (4.0) | 65.6 (3.5) | 74.0 (3.9) | 77.4 (3.0) | 82.6 (3.5) | 58.6 (5.1) | 66.7 (3.6) | 64.2 |
| Obese – high sedentary | 72.2 (87.1) | 69.5 (10.9) | 74.7 (6.7) | 80.3 (5.7) | 84.5 (4.8) | 89.9 (5.1) | 68.5 (7.4) | 76.5 (6.4) | 73.5 |

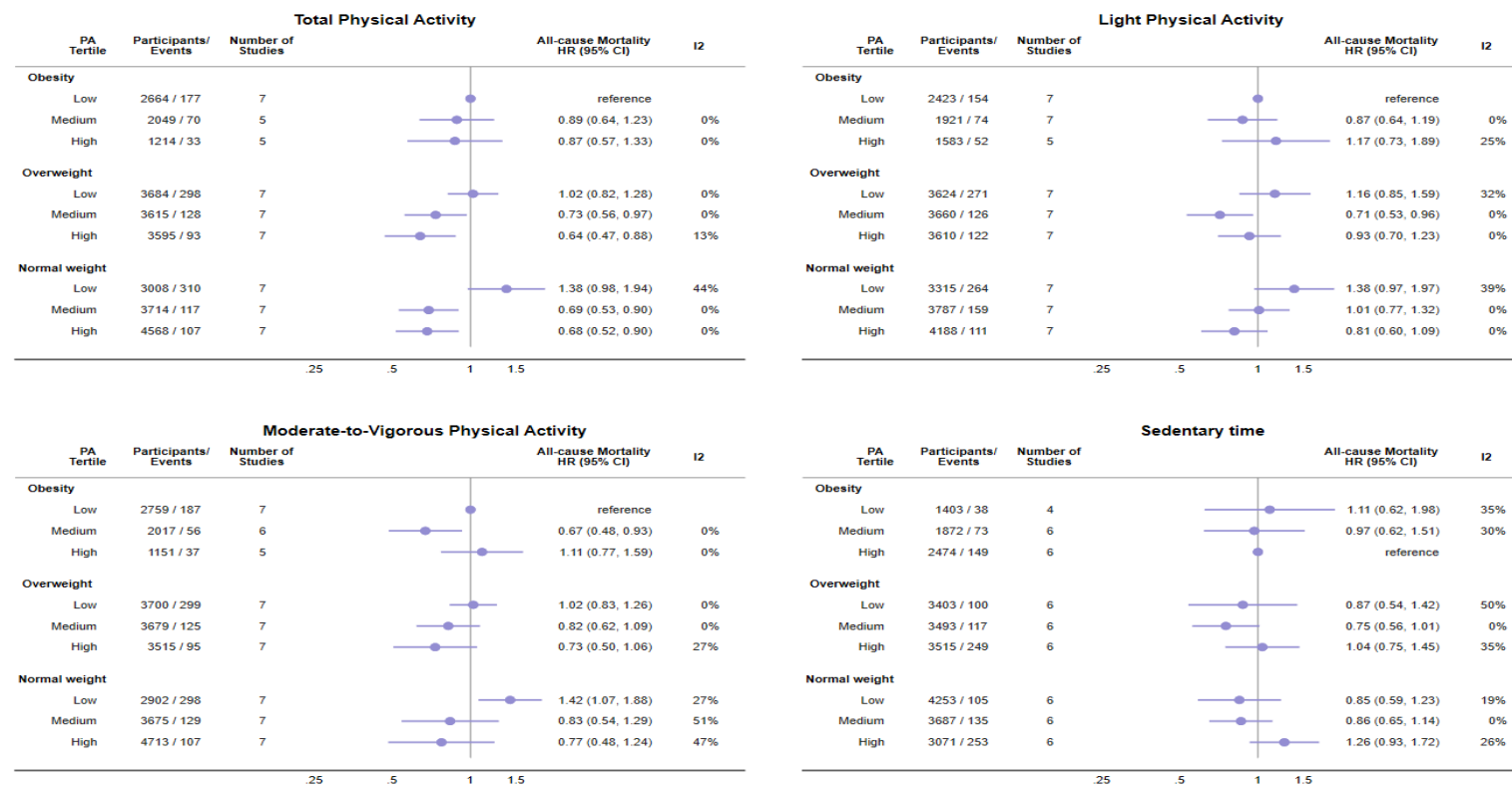
Participants without cardiovascular disease and cancer at baseline (in REGARDS, participants are only free from cardiovascular disease). REGARDS; REasons for Geographical and Racial differences in Stroke, ABC; Sweden Attitude, Behaviour and Change study, BRHS; British Regional Heart Study, WHS; Women's Health Study, FHS; Framingham Heart Study, NHANES; National Health and Nutrition Examination Study, NNPAS; Norwegian National Physical Activity Survey, EPIC-Norfolk; The European Prospective Investigation into Cancer and Nutrition – Norfolk. *CPM, light physical activity, and sedentary time not including cohorts with Actical monitors as absolute levels are not comparable.

eFigure 1. Joint associations of physical activity or sedentary time and BMI with risk of all-cause mortality without control for other physical activity intensities



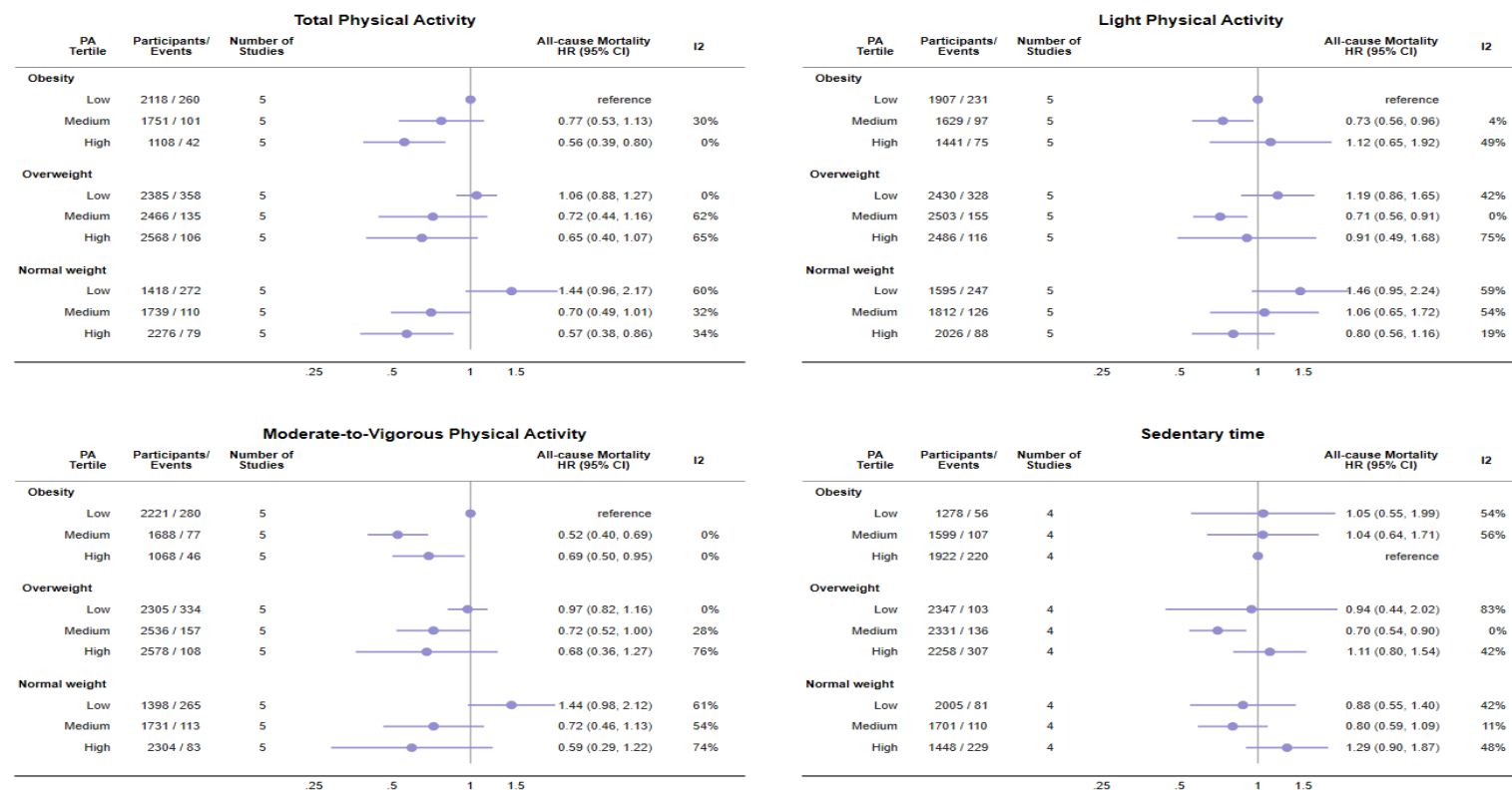
N = 34,492, deaths = 2034. Models are adjusted for age, sex (when applicable), socioeconomic status, smoking, and the covariates included in each study's published final multivariable-adjusted model (see eTable 1 for details).

eFigure 2. Joint associations of physical activity or sedentary time and BMI with risk of all-cause mortality, excluding the REGARDS cohort



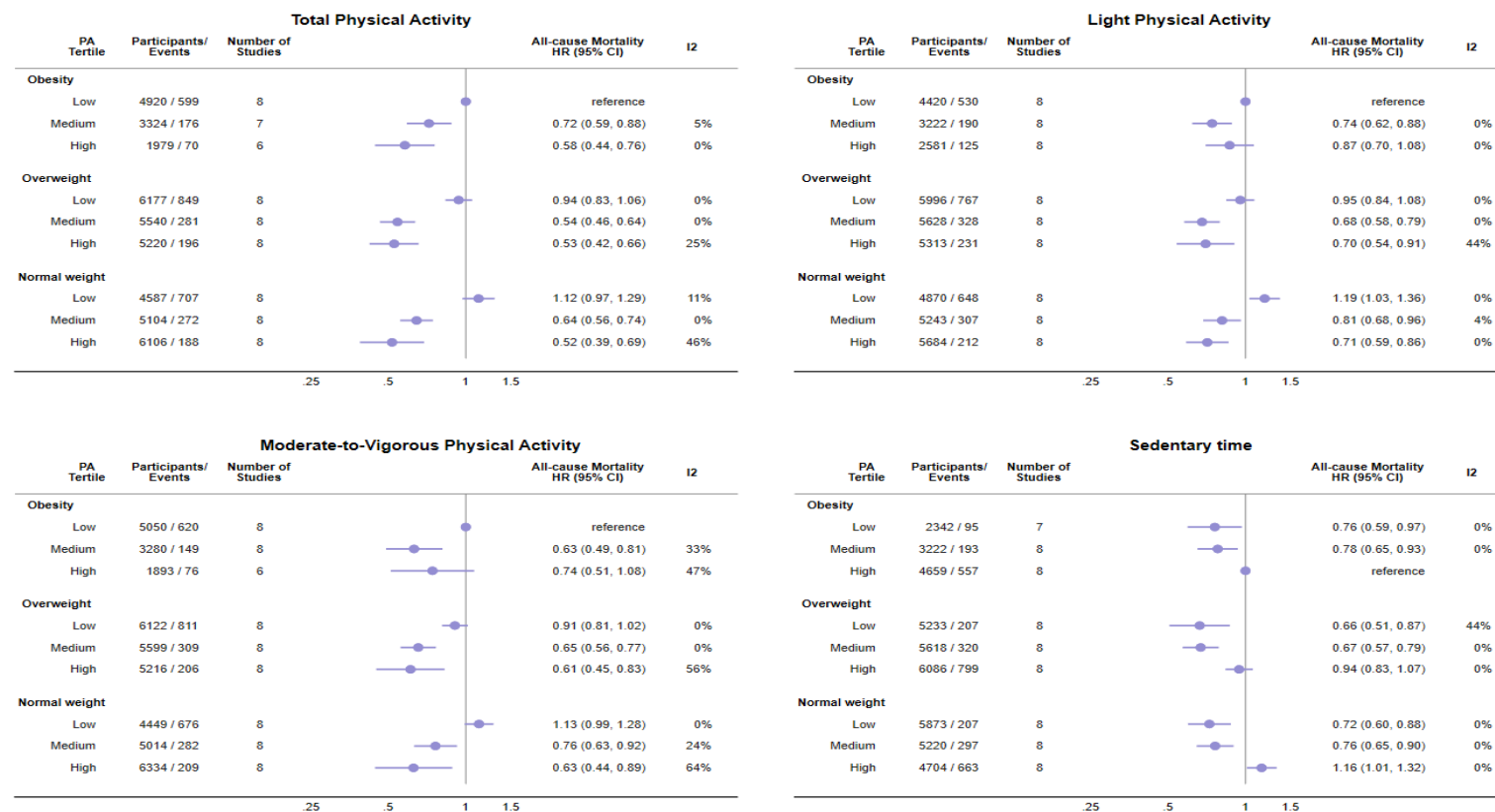
N = 28,111, deaths = 1333. Individuals self-reporting prevalent CVD or cancer are excluded. Analysis of sedentary time includes n = 27,171, 1219 deaths as there were no cases in the reference category in the British Regional Heart Study. Models are adjusted for age, sex (when applicable), socioeconomic status, smoking, and the covariates included in each study's published final multivariable-adjusted model (see eTable 1 for details). Additionally, models using moderate-to-vigorous physical activity were adjusted for sedentary time (continuous form) with sedentary time and light physical activity adjusted for moderate-to-vigorous physical activity (continuous).

eFigure 3. Joint associations of physical activity or sedentary time and BMI with risk of all-cause mortality, cohorts with measured BMI



N = 17,829, deaths = 1463. Individuals self-reporting prevalent CVD or cancer are excluded. Analysis of sedentary time includes n = 16,889, 1349 deaths as there were no cases in the reference category in the British Regional Heart Study. Models are adjusted for age, sex (when applicable), socioeconomic status, smoking, and the covariates included in each study's published final multivariable-adjusted model (see eTable 1 for details). Additionally, models using moderate-to-vigorous physical activity were adjusted for sedentary time (continuous form) with sedentary time and light physical activity adjusted for moderate-to-vigorous physical activity (continuous).

eFigure 4. Joint associations between physical activity or sedentary time and BMI with risk of all-cause mortality, including individuals with self-reported prevalent CVD or cancer at start of follow-up



N = 42,957, deaths = 3338. Models are adjusted for age, sex (when applicable), socioeconomic status, smoking, CVD, cancer, and the covariates included in each study's published final multivariable-adjusted model (see eTable 1 for details). Additionally, models using moderate-to-vigorous physical activity were adjusted for sedentary time (continuous form) with sedentary time and light physical activity adjusted for moderate-to-vigorous physical activity (continuous).

eTable 3. Descriptive characteristics of cohorts, including participants with self-reported prevalent CVD or cancer

| | NNPAS | | ABC | | EPIC-NORFOLK | | BRHS |
|---|-------------------|-----------------|-------------------|-----------------|-------------------|-----------------|--------------------|
| | Women (n=1167) | Men (n=1048) | Women (n=457) | Men (n=371) | Women (n=4163) | Men (n=3363) | Men (n=1311) |
| Age, mean (SD), years | 55.7 (11.0) | 57.1 (10.7) | 52.6 (10.2) | 53.1 (10.5) | 69.7 (7.5) | 70.9 (7.5) | 78.2 (4.5) |
| Counts/min, mean (SD) | 325 (133) | 331 (150) | 341 (213) | 358 (289) | 237 (107) | 249 (127) | 190 (110) |
| LPA/day, mean (SD), % of wear-time | 34.3 (8.1) | 30.9 (8.4) | 38.8 (9.4) | 37.2 (9.9) | 31.5 (8.0) | 27.9 (7.7) | 25.9 (8.2) |
| MVPA/day, mean (SD), % of wear-time | 3.8 (2.6) | 4.2 (2.9) | 3.4 (3.0) | 4.0 (3.2) | 3.2 (2.5) | 3.9 (3.1) | 1.9 (2.1) |
| Sedentary time/day, mean (SD), % of wear-time | 61.9 (8.8) | 65.0 (9.2) | 57.8 (10.2) | 58.8 (11.2) | 65.3 (9.1) | 68.2 (9.1) | 72.3 (9.1) |
| BMI, mean (SD), kg/m ² | 25.3 (4.2) | 26.4 (3.4) | 25.4 (3.8) | 25.9 (3.0) | 26.8 (4.6) | 27.2 (3.7) | 27.2 (3.8) |
| Waist circumference, mean (SD), cm | ni | ni | ni | ni | 90.3 (11.8) | 100.9 (10.2) | 100.0 (10.8) |
| BMI ≥30 kg/m ² , No. (%) | 138 (11.8) | 138 (13.2) | 56 (12.3) | 32 (8.6) | 832 (20.1) | 637 (18.9) | 260 (19.8) |
| Smoking, No. (%) | | | | | | | |
| Never | 534 (45.8) | 456 (43.5) | 186 (40.8) | 160 (43.0) | 2455 (59.4) | 1402 (41.7) | 569 (43.4) |
| Former | 400 (34.3) | 430 (41.0) | 140 (30.7) | 137 (36.8) | 1424 (34.4) | 1776 (52.8) | 695 (53.0) |
| Current | 233 (20.0) | 162 (15.5) | 130 (28.5) | 75 (20.3) | 257 (6.2) | 185 (5.5) | 47 (3.6) |
| Ethnicity, No. (%)* | | | | | | | |
| White | ni | ni | ni | ni | 4115 (99.8) | 3338 (99.5) | 1276 (99.5) |
| Black | ni | ni | ni | ni | 1 (0.0) | 3 (0.1) | 1 (0.1) |
| Other | ni | ni | ni | ni | 6 (0.1) | 13 (0.4) | 5 (0.4) |
| Prevalent CVD, No. (%) | 54 (4.6) | 117 (11.2) | 6 (1.3) | 22 (6.0) | 972 (23.5) | 1137 (33.8) | 207 (15.8) |
| Prevalent Cancer, No. (%) | 74 (6.3) | 67 (6.4) | 13 (2.9) | 82 (2.2) | 729 (17.6) | 451 (13.4) | 197 (15.0) |
| | | | | | | | |
| | FHS | | REGARDS | | NHANES | | WHS |
| | Women (n=2046) | Men (n=1765) | Women (n=4061) | Men (n=3339) | Women (n=1878) | Men (n=1840) | Women (n=16175) |
| Age, mean (SD), years | 58.1 (11.9) | 58.2 (12.0) | 68.2 (8.7) | 69.8 (8.4) | 57.2 (11.7) | 55.8 (11.6) | 71.9 (5.6) |
| Counts/min, mean (SD) | 143 (117) | 160 (131) | 84 (64) | 105 (79) | 268 (120) | 322 (157) | 222 (103) |
| LPA/day, mean (SD), % of wear-time | 20.6 (6.8) | 21.3 (7.7) | 16.6 (7.6) | 17.6 (7.7) | 39.6 (10.0) | 38.3 (11.3) | 32.0 (8.4) |
| MVPA/day, mean (SD), % of wear-time | 1.8 (2.2) | 2.1 (2.4) | 0.8 (1.3) | 1.2 (1.7) | 1.9 (2.0) | 3.1 (2.9) | 1.7 (1.8) |
| Sedentary time/day, mean (SD), % of wear-time | 77.7 (7.6) | 76.7 (8.5) | 82.6 (8.1) | 81.3 (8.4) | 58.5 (10.8) | 58.5 (12.5) | 66.3 (9.1) |

| | | | | | | | |
|-------------------------------------|-------------|--------------|-------------|-------------|-------------|--------------|--------------|
| BMI, mean (SD), kg/m ² | 27.6 (5.7) | 28.9 (4.7) | 29.0 (6.2) | 28.3 (4.6) | 28.9 (6.6) | 28.7 (4.9) | 26.4 (4.9) |
| Waist circumference, mean (SD), cm | 95.3 (14.5) | 103.5 (12.2) | 89.5 (14.8) | 98.7 (12.0) | 95.7 (14.4) | 103.6 (12.9) | ni |
| BMI ≥30 kg/m ² , No. (%) | 558 (27.3) | 597 (33.8) | 1499 (36.9) | 982 (29.4) | 655 (34.9) | 611 (33.2) | 3218 (19.9) |
| Smoking, No. (%) | | | | | | | |
| Never | 1055 (51.6) | 944 (53.5) | 2331 (57.4) | 1356 (40.6) | 1070 (57.0) | 714 (38.8) | 8164 (50.5) |
| Former | 846 (41.3) | 713 (40.4) | 1316 (32.4) | 1646 (49.3) | 503 (26.8) | 712 (38.7) | 7461 (46.1) |
| Current | 145 (7.1) | 108 (6.1) | 418 (10.3) | 341 (10.2) | 304 (16.2) | 414 (22.5) | 550 (3.4) |
| Ethnicity, No. (%)* | | | | | | | |
| White | 1844 (90.1) | 1610 (91.2) | 2614 (64.4) | 2475 (74.1) | 1455 (77.5) | 1456 (79.1) | 15418 (95.3) |
| Black | 65 (3.2) | 40 (2.3) | 1447 (35.6) | 864 (25.9) | 182 (9.7) | 160 (8.7) | 246 (1.5) |
| Other | 137 (6.7) | 115 (6.5) | 0 (0.0) | 0 (0.0) | 241 (12.8) | 224 (12.2) | 511 (3.2) |
| Prevalent CVD, No. (%) | 133 (5.5) | 182 (10.3) | 345 (8.5) | 564 (16.9) | 188 (10.0) | 234 (12.7) | 379 (2.3) |
| Prevalent Cancer, No. (%) | 332 (16.2) | 251 (14.2) | ni | ni | 248 (13.2) | 184 (10.0) | 1886 (11.7) |

LPA; light intensity physical activity, MVPA; moderate-to-vigorous physical activity, BMI; body mass index, CVD; cardiovascular disease, Ni: no information, REGARDS; REasons for Geographical and Racial differences in Stroke, ABC; Sweden Attitude, Behaviour and Change study, BRHS; British Regional Heart Study, WHS; Women's Health Study, FHS; Framingham Heart Study, NHANES; National Health and Nutrition Examination Study, NNPAS; Norwegian National Physical Activity Survey, EPIC-Norfolk; The European Prospective Investigation into Cancer and Nutrition – Norfolk. All studies used a version of the Actigraph accelerometers, except REGARDS and FHS which used Actical accelerometers. *Numbers may not sum to total sample due to missing data.